

KEYA HOMES

AROUND

— THE LIFE





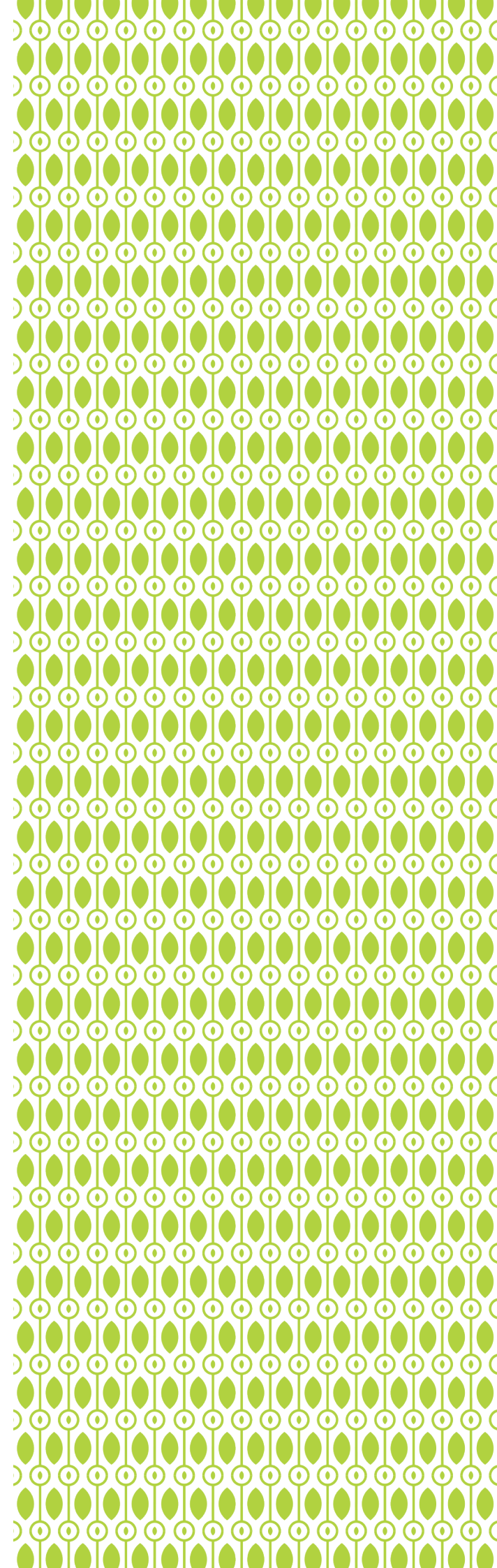
Our Philosophy

Since its inception, Keya Homes has been transforming lifestyles. The philosophy has always been to create homes that bring nature and technology to humankind.

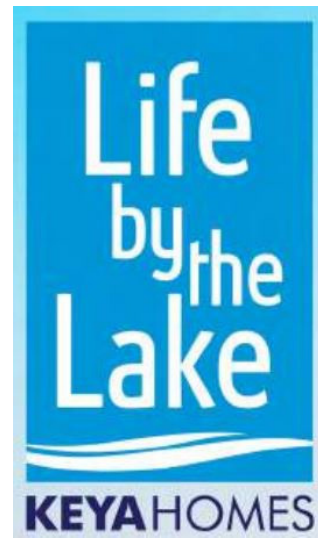
A philosophy that's been brought to life with green projects, solar power, and futuristic technology. This promise of sustainable living has been aptly complemented by smart designs and signature lifestyle choices. By nestling every step with lush greenery and fresh air, we've restored the purity of nature.

Adopting your distinct tastes to contemporary amenities, we've created the future for you. We stop at nothing when it comes to building a home of memories. We've lent thoughtfulness to our creativity with a transparent, hands-on approach that combines the best of planning and execution to deliver uninhibited happiness.

ABOUT THE MAKERS



Our Completed Projects



A boutique collection of 50 luxurious duplex homes with private garden, nestled on the shores of Bangalore's most pristine natural lake – the Jakkur Lake.



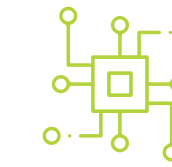
An ode to the fusion of nature and technology – a collection of 393 bespoke homes in variety of 1, 2, and 3 BHK situated in Electronic City.

What We Are Known For



One with Nature

The one constant in our properties. The only change you feel is the experience, from forest theme jogging tracks and oxygen pavilions to full sunlit homes, nature is your forever companion in our homes.



Technological Foresight

We don't keep up with it. We stay ahead of it. Be it to impart convenience through home automation or to nurture the environment through solar power, zero water discharge system, our technology is new, innovative, and rewarding.



Designing Lifestyles

It breathes life into even the tiniest details. The aim is to let you reside along with nature. And plenty of open spaces ensures nature will never let you go.

Vision

Keya Homes Private Limited is a professionally managed company with a completely transparent approach. It has been incorporated with the intent of building contemporary residential landmarks in Bangalore.

Vision @ 2025

Be the first choice for home seekers who aspire to buy a home.

Mission

Our endeavor is to lead the development of futuristic properties by building homes with timeless designs and quality, through well-planned processes.



We are on time, every time.

Keya Homes Project Completion

2.5-3 years

vs.

Other Name Brand Project Completion

5-6 years

We nurture your hard-earned trust.



What Sets Us Apart: Our Driving Force



Technology

We create homes that are intuitive and technologically forward while keeping an eye out for the environment, always. We build future-ready homes.



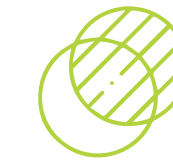
Economical Homes

We price our products- even the luxury, high-end ones - at a price that is economical and keeps us accessible.



Debt-Free

Keya Homes Private Limited is a debt-free company.



Transparency

When you're on a journey with us, there are no secrets between us. Complete transparency is our credo.



International Brands

We bring internationally acclaimed brands closer to you, keeping quality and your safety at the forefront.

In a short span of 3 years, Keya Homes has helped 400 home buyers with **Rs. 85 crores** of interest saving on their home due to faster completion of projects.



The first bike ride,
the first jolt of inspiration,
the first eyes-wide-open moment
of 'Eureka!'

We remind you to keep chasing new firsts.

Keeping the tradition of firsts **alive.**

Curiosity,
kept alive.

The thirst for better,
the thirst for the next "Aha!" moment,
the thirst for being part of something
bigger than ourselves.

We encourage your thirst for more.

Keeping the pursuit of more **alive**.

Aspiration,
kept alive.





Just Enough Was Never Enough

Curiosity and progress go hand-in-hand; home-centered innovation sparks an undying thirst for the unknown.

Around The Life is situated in the heart of Whitefield. This is where Bengaluru's most bustling and innovative companies find the right balance between peace to dream and drive to succeed.

Are You Prepared to Find the World at Your Feet?

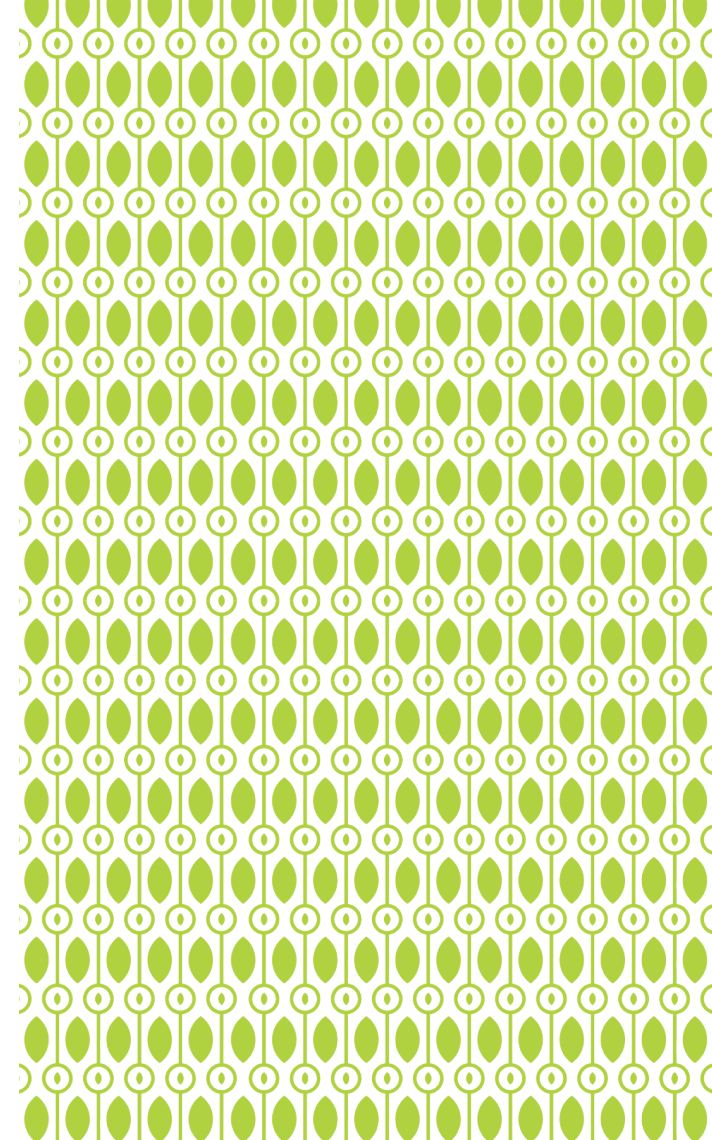
The hustle and bustle of Whitefield's work culture are perfectly complemented by the decadent luxury that goes with it.

Breathe life back into your days and unwind in the choicest of ways, because all work and no play is no way to live.

More choices are always better than fewer.

There is Absolute Freedom in Everlasting Selections.

Come find the finest bars, cafés, restaurants, and breweries – gracing you with live music and gastronomical experiences beyond your wildest dreams.



WHITEFIELD

At the Center of Any Great Endeavor, Lies Sustainability.

We embrace this sentiment wholeheartedly, and reflect it in the spaces we create for you.

Live in a community that is good for the planet.



A Self-sustained, Harmony

Does a **green powered home**, pre-fitted EV charging point, **100% recycled water** supplied to your taps, and **self-generated oxygen**, sound like a dream?

Well, then, welcome to your dream home! A home that is also the abode to



6300+ plants



12+ variety of birds



3.4 acres of open space

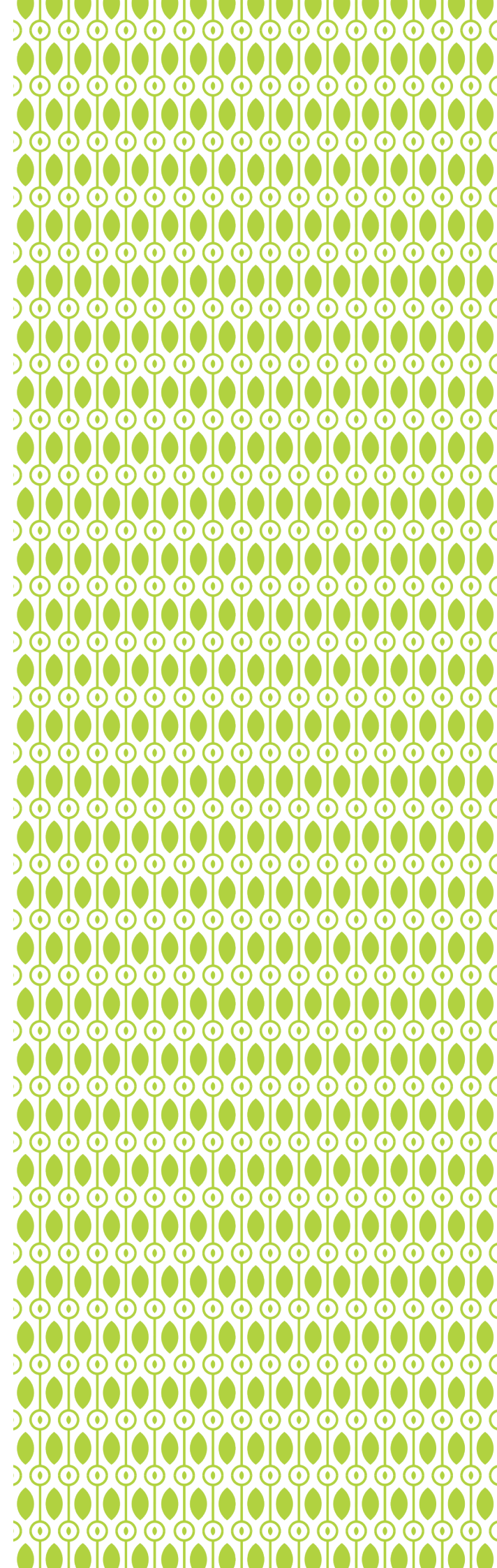


1+ acres of playing grounds



2+ acres of landscape

An inviting space for all – your home is designed to be rated as **Platinum, by The Indian Green Building Council.**



Kindness to the Planet is Good for Your Lungs, and for Your Heart

Our architects bring you a home where the free flow of a fragrant breeze might pleasantly catch you any moment of the day.

With this thought and more we keep our environment unobstructed – with no open parking at the podium but only lush landscape to surround you.

We think it's time that you see more sun than your car!

Enjoy access to Electric Vehicle charging points at all car parks, your community terrace garden, and knowing that all building materials are picked up keeping the environment in mind.





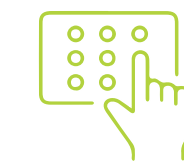
Smart location, plus smarter technology, equals a lifestyle of intuitive brilliance

Do you know the ease of living when your home has a smart intuition about your needs and works to keep you happy? Well, now you will.

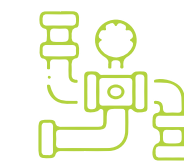
Keeping your safety, comfort, and robust lifestyle in mind, we have used



Radio frequency identification for all entry points



Access control for all residents



Centralized gas in all units



Video Door Bell



Centralised Camera Surveillance for common area



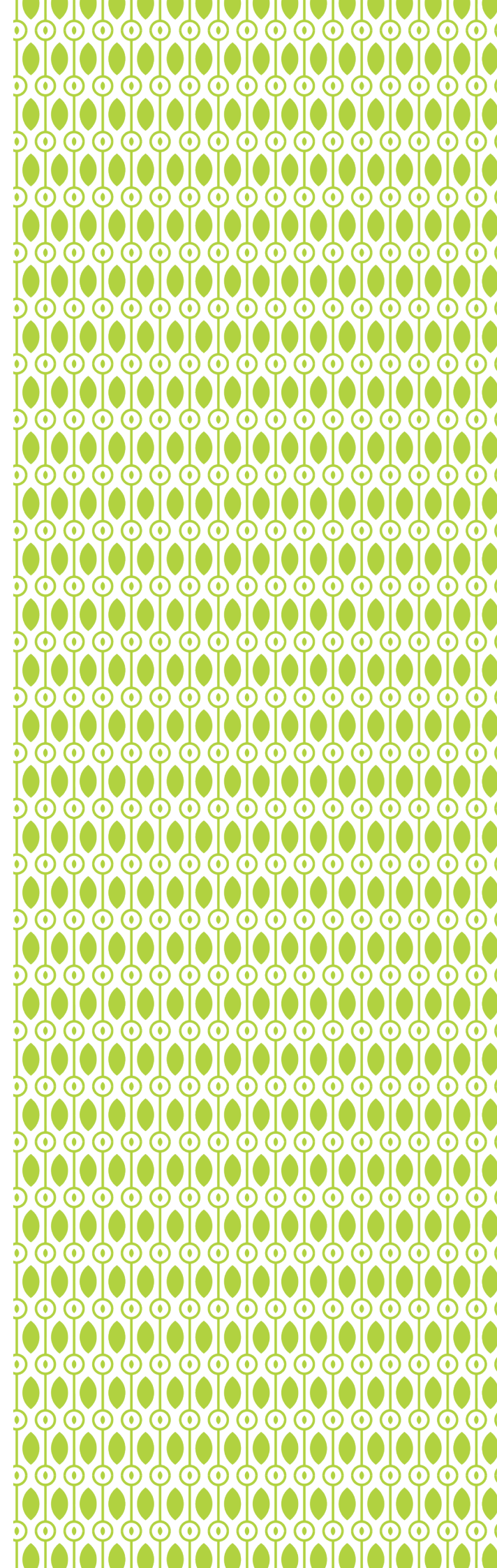
Centralized broadband connection



Centralized satellite cable system

And every other lush wish you can think of – your home has already thought of it.

Get ready to PLUG & PLAY – no wiring or cables necessary. This is intuition.





Welcome to
Around The Life

Curiosity, aspiration, and the thirst
for more – kept alive.

Homes that Inspire, and are Inspired, by Life

Condensing every amenity you could ever
need into one, power-packed residential dream
property— we have a little something for everyone.

Allow your spirit to run free amongst our lush
landscape, while away a lazy weekend sunbathing
by the pool, or gear up for a exciting game of
badminton with the kids.

Explore the infinite possibilities that come with an
inspired lifestyle

From Keya's Desk

We take pride in introducing "Around The Life" to you. We have spent maximum time on the drawing board, designing the project as it's the most important thing to do. This has a cascading effect on the way you would enjoy your living at the project. We have put in our best efforts to have a right balance of contemporary design, technology, material palette, and amenities on the project for you, keeping in mind your day to day lifestyle. We ensure that we stay ahead in our game and deliver you homes which are timeless in design.

As a Company, we do respect our money and time, and yours too. We ensure that we finish the project in the fastest possible time and deliver your home to you on or before committed timelines. You would experience many first-time experiences in this project.

Rest assured, you will find a reason to choose the project and live here and always have the feeling of being a proud owner of a home at "Around The Life".

- KEYA Management

About Our Architects – Urban Frame



Raghavendra U Hegde

Director And Principal Architect,
Urban Frame Private Limited

The entire project design narratives are around the fundamental needs of the human life. The design goal was to provide exclusive living, where the elegance and serenity of spaces and amenities can be experienced by even a smaller community. The form shall closely intermingle with both natural light and wind to make everyday living more rooted with nature. The position of the tower has been carefully looked at by ensuring that every unit has a dialogue with the crafted landscape. The emphasis has been given for indoor and outdoor visual connect helps in giving a sense of expanse of space. The positioning of the units helps in ensuring the units are lit most of the day. Each unit has at least one bedroom with walk-in wardrobe and a bay window as a lifestyle feature which differentiate your home from others. Around the Life by Keya Homes admires elegance and have an appreciation of the finer things of life.

Landscape Consultant – ecoINSCAPE

Sudhir R Chougule,

Principal Architect,
Eco Inscape Bangalore

Sudhir has a tremendous passion for bringing people closer to nature. He has 20 years of experience in making homes come to life with the landscape. He has a Master's Degree in landscape from CEPT Ahmedabad in 1998. In his long experience, he has handled various types of projects in Bangalore and various locations across South India.

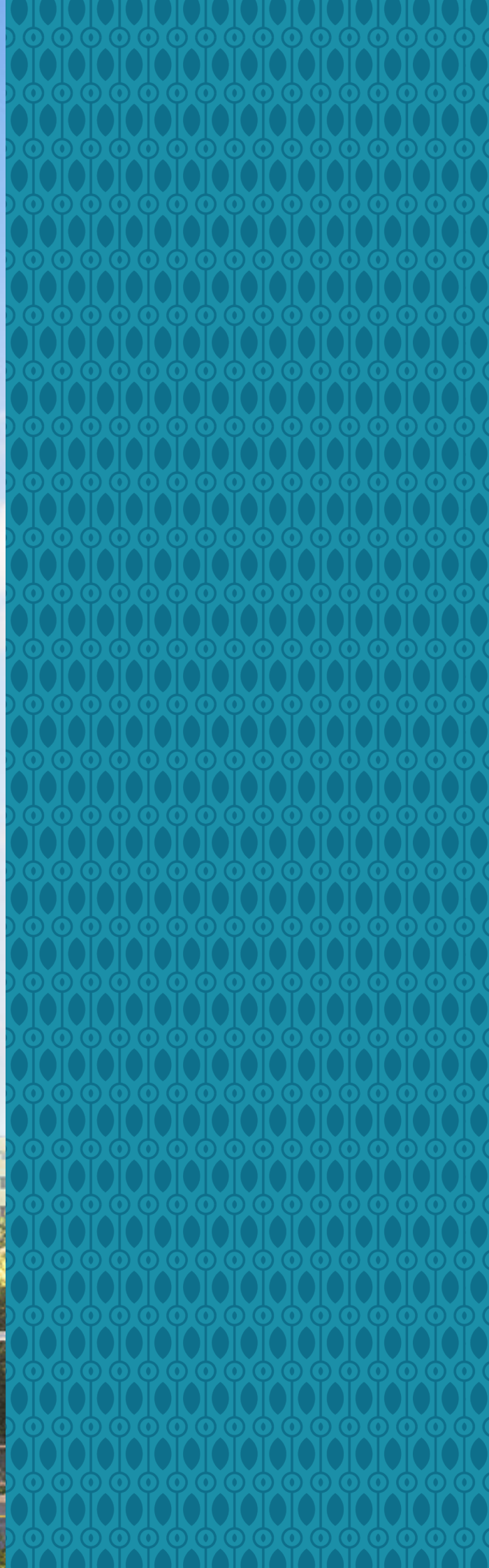


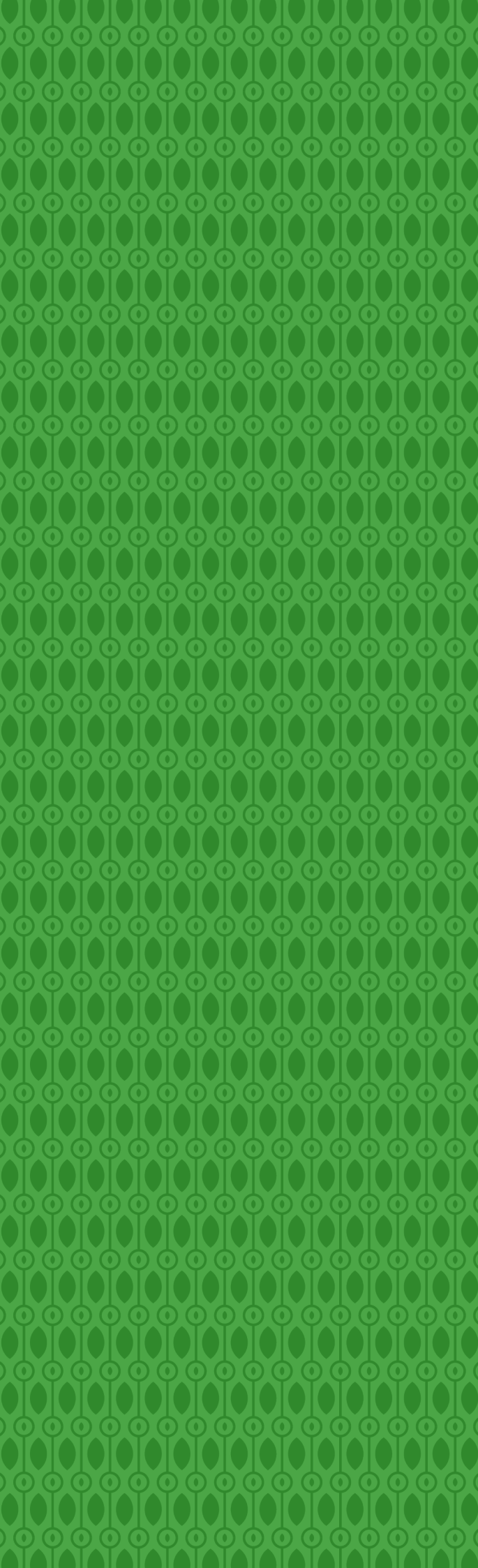
AROUND THE LIFE Design Philosophy

- The first significant space extent has been designed as a family zone where every member of the family finds their own space in the landscape. We have created an exclusive **children's play area** with play equipment sourced from the world's best manufacturer **Kompan**. This play park with Kompan's expertise offers unique experiences that inculcate courage, strength, and cognitive development in the children. The dynamics of this space are heightened with children playing in the walking fountain, sand bed, and mini fort area.
- The children's play areas are anchored by the **family pavilion** and **Wigwag swing pyramids**. These are the places where parents can sit and watch their ward enjoying playing in the open sky. They also act as a socializing corner. The landscape experience of the elders is further accentuated by the company of the **aroma garden** and **chromo-therapy flower garden park**. The chromo-therapy park helps residents to de-stress by enjoying a flower garden curated with specific colors for each zone.
- The second large parcel has a state-of-the-art **7-A-Side size futsal court**. The envisaged size for this court is way beyond size by industry standards. It offers best-in-class facilities for football and for box cricket. We have proposed a separate cricket net for professionals to practice their skills with a leather ball.
- We have curated multiple spaces for senior citizens. We have created neighborhood facilities near apartment entry for ease of convenience. We have proposed user-specific amenities like **tabletop games, swings, mythological trees grove, reflexology**, and a **sand bed walkway**, that facilitate them to spend more time in the garden.
- The third parcel has a multicourt designed for active **tennis** and **basketball**. This space is surrounded by a nutritive garden, hammock zone, and O2-generating plants that bring in good health vibes.
- The total landscape has more than 7300 plants/trees including 800 trees of diverse sizes that produce 1 Lakh kg of oxygen and attracts many birds and butterflies. The envisaged landscape design offers many direct and indirect connections with nature.
- We have proposed a **large swimming pool** on the clubhouse terrace with infinite edges. The envisaged design becomes a unique water sensory experience with exclusive facilities like **aqua yoga** platforms.
- The terrace of each apartment block has a cluster of amenities that connect users with the open sky. These clusters are a combination of amenities like an **outdoor gym, sunset deck, zero gravity, and herbal garden** that offer users a connection with nature.

Sprawled across a serene five acres, your home will now fuel your desire for more...

More features,
more potential,
more life.





PODIUM

1.60 Lakh square feet of uninterrupted, undisturbed area where life happens. Just nature, and you.

Minus the cars.
Minus the parking.
Minus the cacophony of the world outside.

Add on inspiration.
Add on creativity.
Add on life.

Must we make a pilgrimage to the beach to laze in a hammock or find our children constructing the sand palaces of their dreams? Or maybe to stadiums to kick a ball around with friends and strangers and hit the bat hard to a hurling ball?



We think not.
The makers of the
Podium think not.



Flower Bed with Trees

Along with your home comes a whole new habitat for 20+ variety of birds and butterflies.

A flower bed where life happens. Where charm comes to life. We secure the other amenities from the public view of the driveway with a lush green buffer.

Your son brings home a single white rose on Mother's Day from the garden. Your daughter has a train of wild flowers lining her pony that her friends have put in her hair.

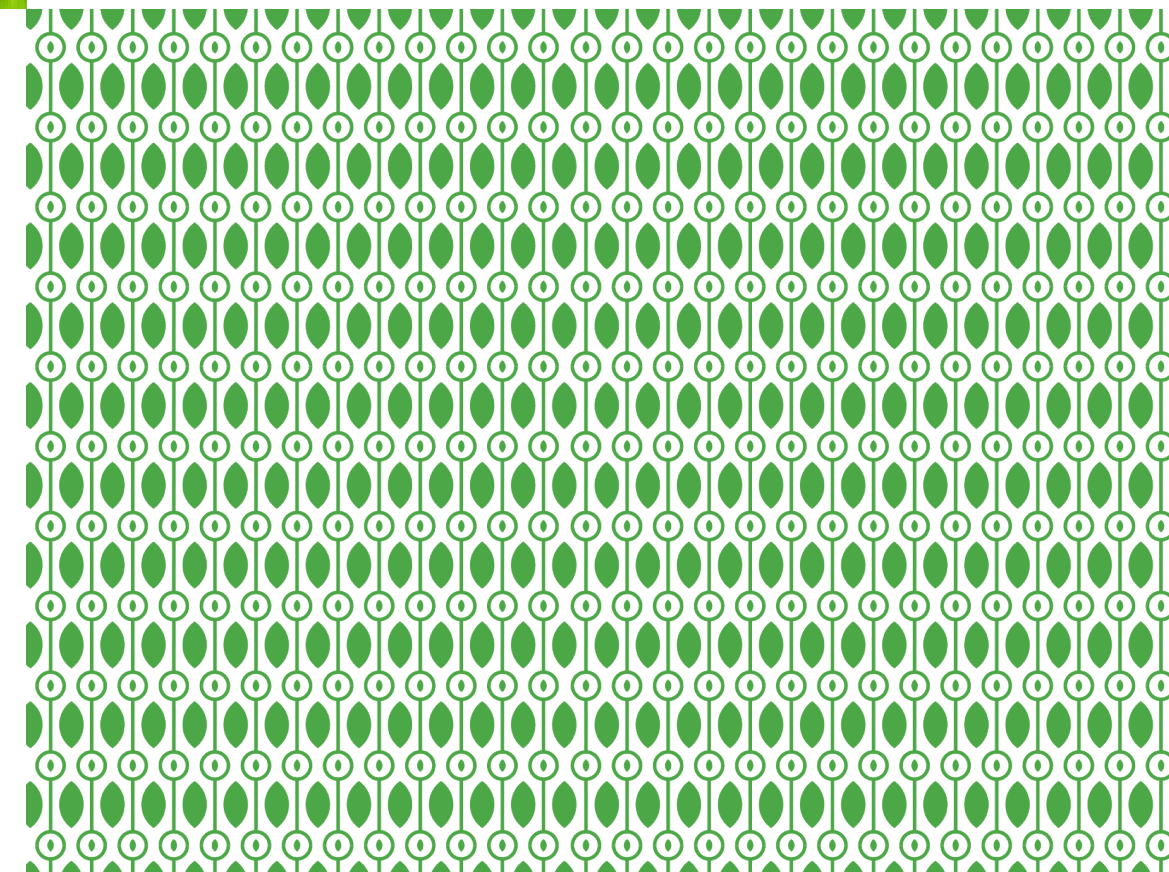
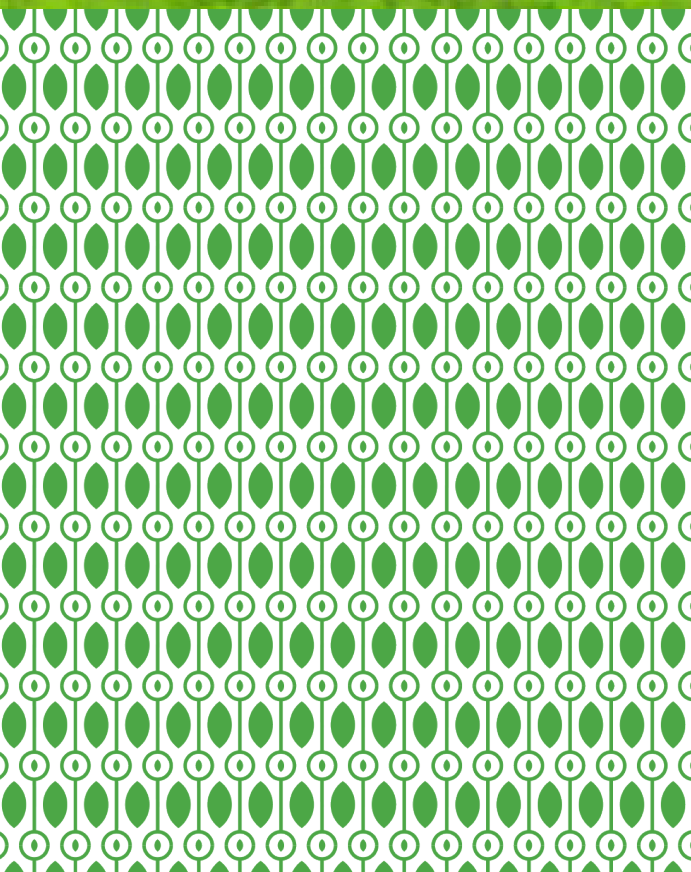


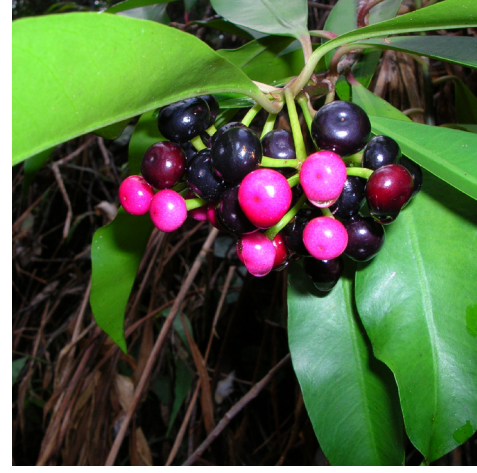
Peripheral Plantation

750+ trees lining the runway to your home is your new red carpet.

A breeze rushes in with you, bringing in the flora and fauna the city used to be known for.

Live amongst a biodiversity that invites the birds, bees, and butterflies into your home.





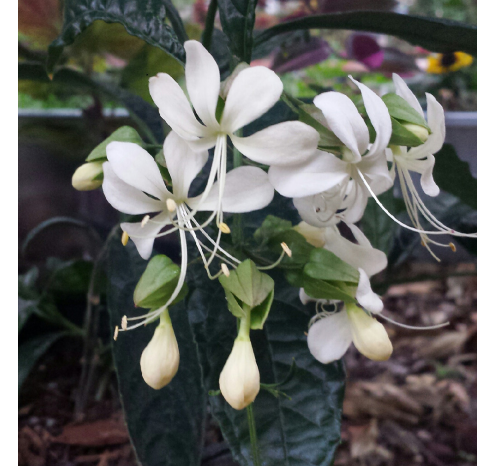
Ardisia Elliptica



Leea Indica



Clerodendrum Aculeatum



Clerodendrum Philippensis



Syzygium Caryophyllatum



Clerodendrum Indicum



Clerodendrum Colebrookianum



Wrightia Tinctoria

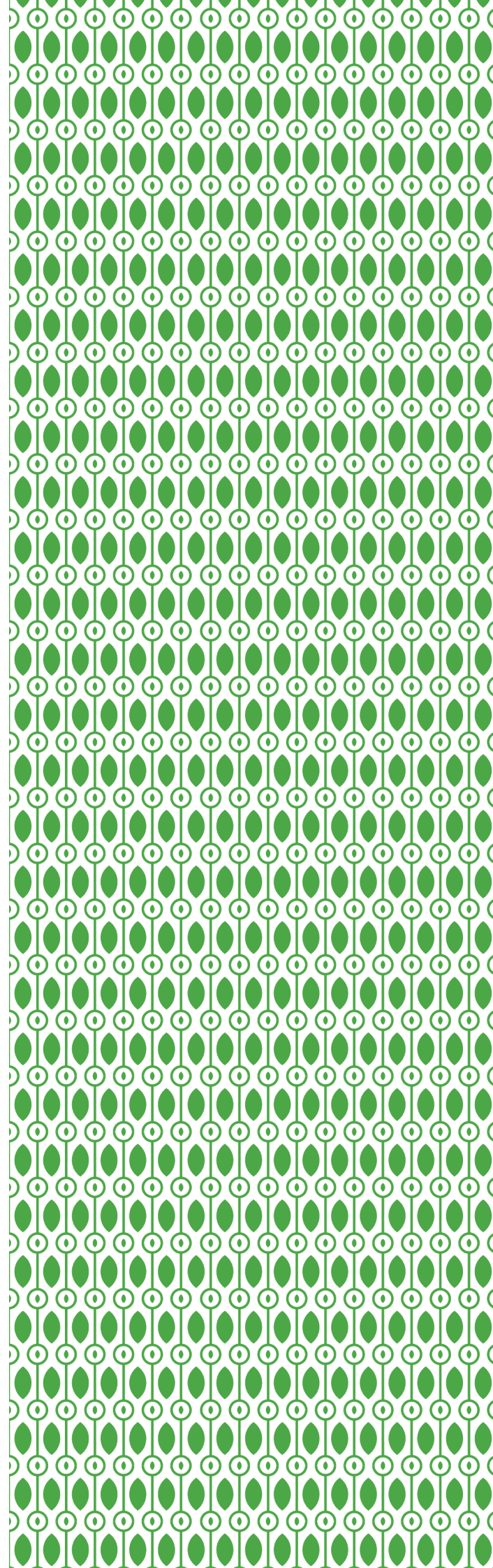


Premna Serratifolia



Lawsonia Inermis

Gushing oxygen into your life with plants and trees that naturally generate more oxygen. Greenery that invites birds and butterflies for restful afternoons and rainy nights. Surround yourself with life that gives life.





Belenois Aurota
Pioneer white



Ixias Marianne
White orange tip



Danaus Genutia
Striped tiger



Talicada Nyseus
Red pierrot



Coracias Benghalensis
Indian Roller



Ploceus Philippinus
Indian baya weaver



Cacomantis Passerinus
Grey bellied cuckoo



Psilopogon Haemacephalus
Coppersmith barbet



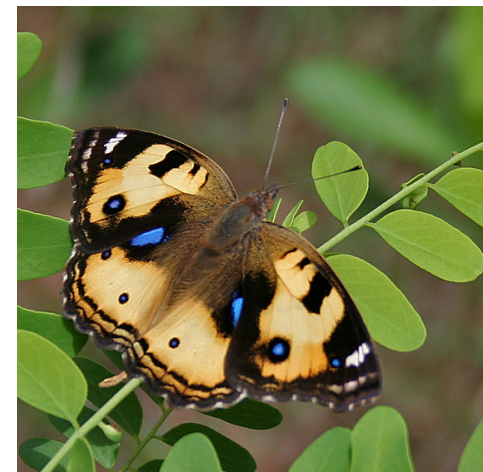
Merops Orientalis
Asian green bee eater



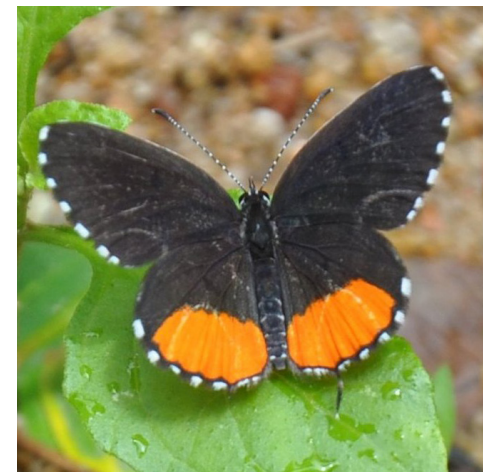
Eurema Brigitta
Small grass yellow



Colotis Aurora
Plain orange tip



Junonia Hierta
Yellow pansy



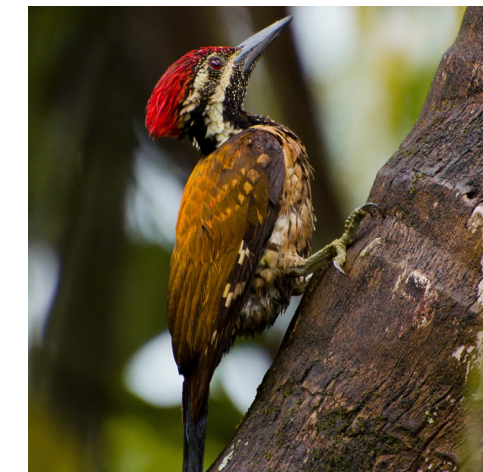
Talicada Nyseus
Red pierrot



Prinia Socialis
Ashy prinia



Parus Cinereus
Cinereous Tit



Dinopium Benghalense
Black rumped flameback



Pycnonotus Jocosus
Red whiskered Bulbul



Eudynamys Scolopaceus
Asian Koel



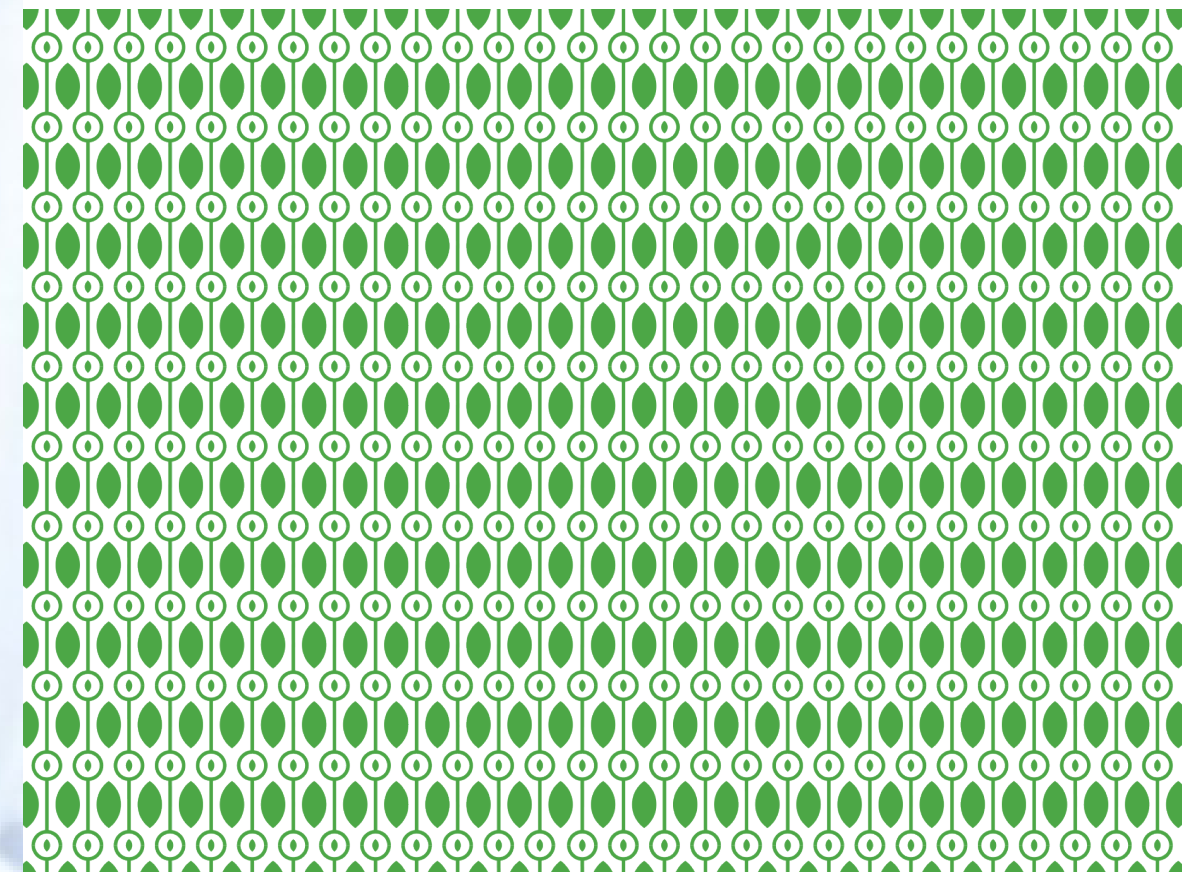
Chromotherapy Flower Garden

For a unique destressing experience. After a long day at work, sit amongst the 2 variety of chromotherapy flowers that help you de-stress.

Using the centuries-old concept of chromotherapy that utilizes the visible spectrum of colors – we have brought the practice back to life with a diverse flower garden that helps you unwind and invite your sense of wonderment.

Therapeutic aspect of colour – Deep Pink / Red is energizing and provides a sense of confidence and courage

Therapeutic aspect of colour – Yellow shines with hope and happiness and stimulates creativity



Nutritive Garden

An orchard in the backyard is the dream, isn't it? A place to spend a Sunday afternoon that is both calming and nurturing.

With 7 varieties of nutritive plants, you can stroll to better health.

We keep the dream alive with the nutritive garden that offers the gift of nature, nostalgia, and good health.



Custard Apple
Vitamin C, Riboflavin



Barbados cherry
Highest content of Vitamin C, Riboflavin



Indian Gooseberry
Vitamin C, Vitamin B, Calcium, Phosphorus, Iron Carotene



Guava
Vitamin A and C, Calcium, Iron



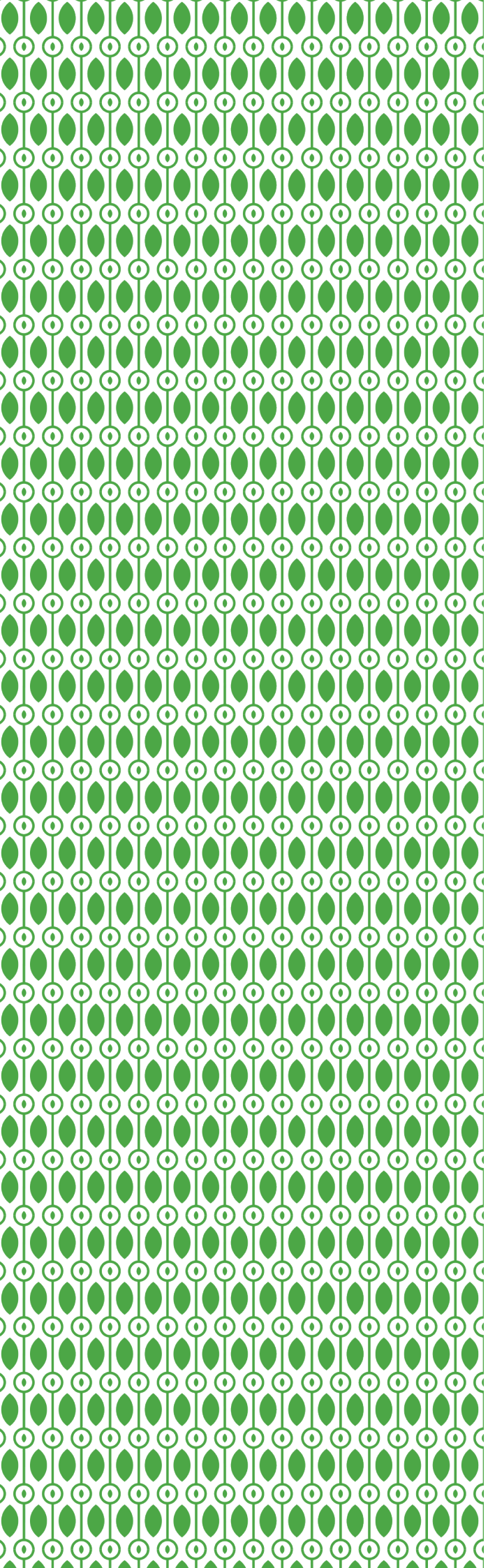
Mango
Vitamin A and C



Water Apple
Vitamin A and C



Lemon
Vitamin C



Oxygen Pavilion

"Breathe deeply, until sweet air extinguishes the burn of fear in your lungs and every breath is a beautiful refusal to become anything less than infinite".

Where breath is life, the oxygen must be better than pure.





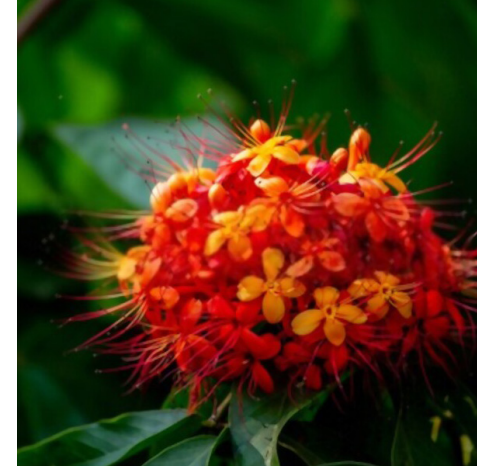
Simarouba Glauca



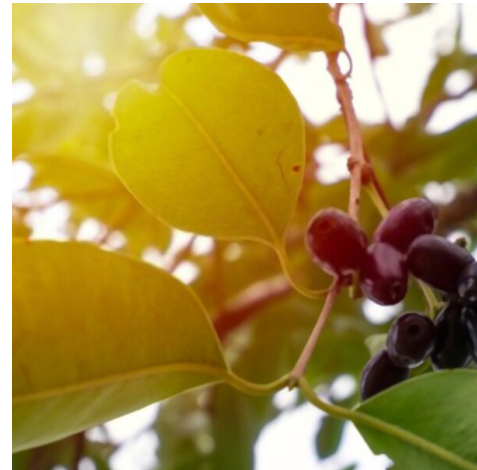
Putranjiva Roxburghii



Pongamia Glabra



Saraca Asoca



Syzygium Cumini



Azadirachta Indica



Ficus Bengamina Green

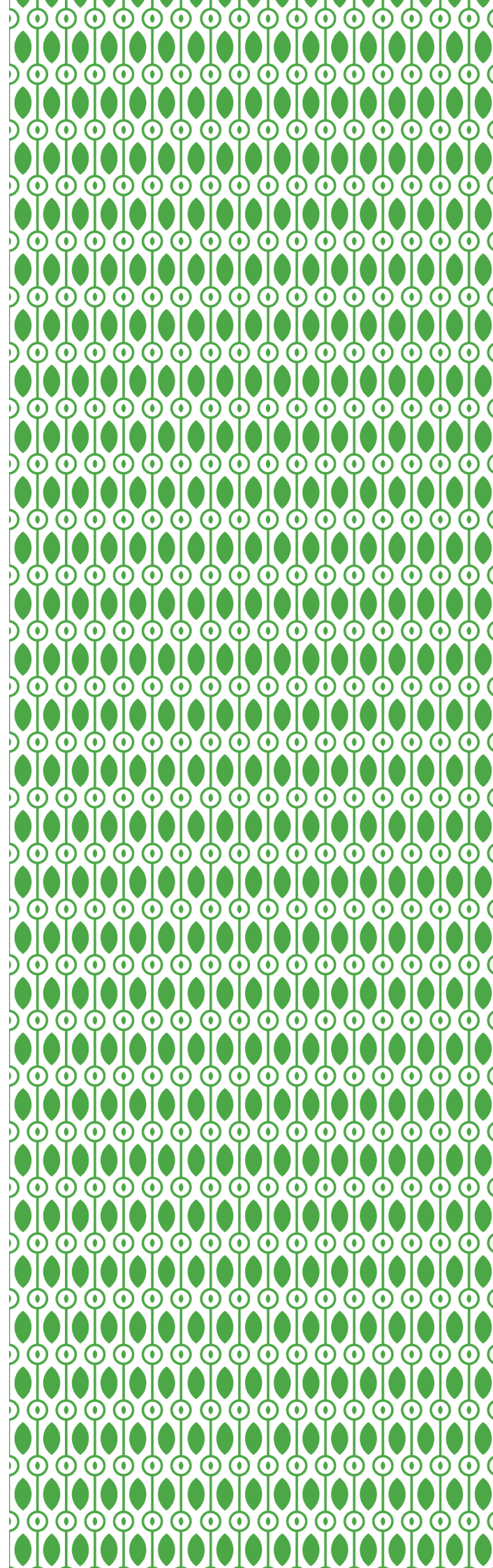


Terminalia Arjuna

With the application of the scientific study conducted by NASA to research plants that release significantly more amount of oxygen while naturally eliminating organic pollutants, **we bring to you the Oxygen Pavilion.**

What sets us apart — makes us who we are — the one constant in our properties is closeness to nature. Meeting nature as nature, air as breath, water as life.

A few of the plants we have introduced in the Oxygen Pavilion possessing a plethora of health benefits are:





Mini Fort

Of the stories your kids will tell one day, one will be –

“My parent’s house had a mini fort where I learned to let my imagination run wild, think divergently, and let creativity triumph.”

We think it’s a great story, don’t you?



Toddlers’ Play Area

There is something for everyone – including your toddlers.

A moment of wonder, a discovery that leads to a curious life, a dazzling thirst for knowledge – it all starts here. With the first sand castle, with the first friend, with the first puzzle.

We have designed a safe and sound play area for toddlers that is perfect for the development of their motor skills.



Kompan Children's Play Area

Where the Kids Come Alive

From the premium planners of kids' fun zones – Kompan – we bring a world where imagination, curiosity, and budding hope are kept alive.

An exclusive children's play area designed with the innovative Kompan play equipment which engages and develops children of all ages.





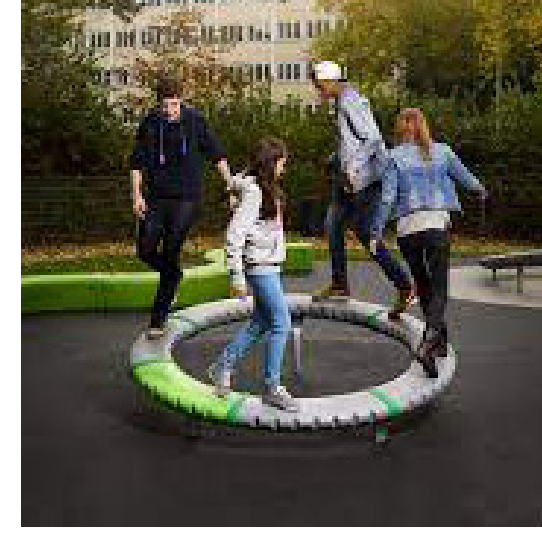
Sky Carousel

a playground hit



Spinner Bowl

for some dizzying fun



Supernova

The solo and team thrill of the new Supernova



Portal Swing

for the kids who can have fun by themselves too



Activity Dome

that can house over 50+ kids at a time



Spica

The adventures on Spica

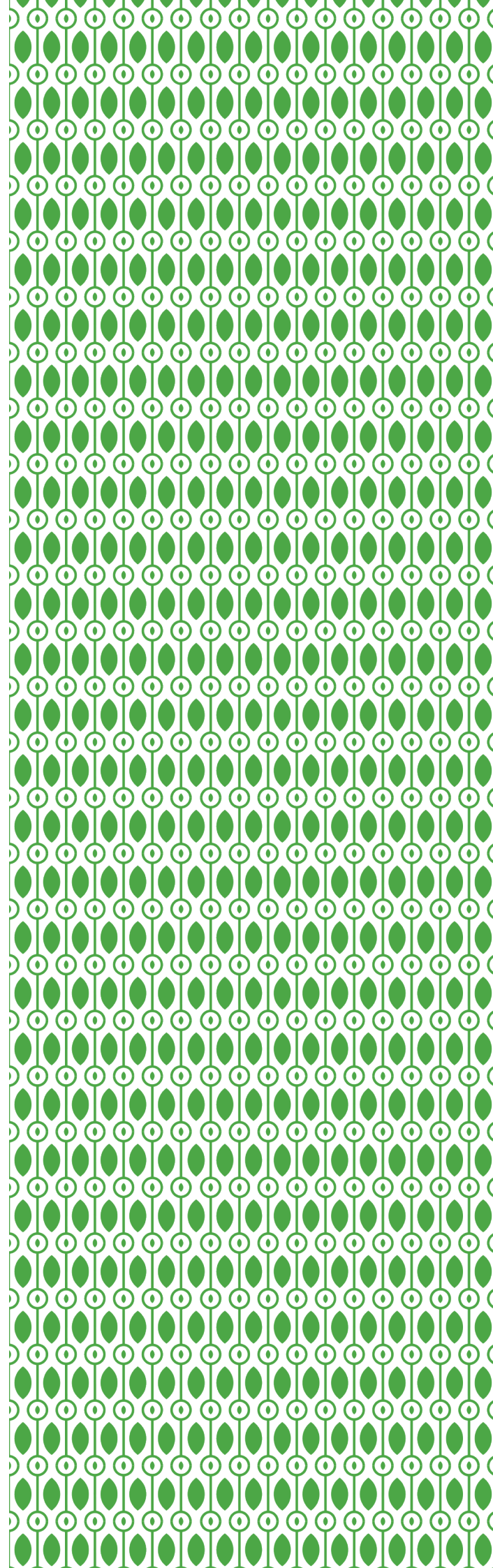


Classic Swing

for some good old-fashioned touching of the sky with your feet

The strength to face failures,
and be humble in the wins.
The courage to be wrong,
and the mettle to be right.
The bones to stand alone,
and the heart to belong to a team.

It is all learned while having fun.
What will our children learn?





Floor Games

A playground of imaginative strategy games ingrained on the floor, creating a larger-than-life experience to develop the cognitive abilities of our youth.

Its time for your kids to skip the Ludo on their device and take real chances on the floor of life.



Swing Court

All age groups come together in the swing court, equipped with seating as well, to create a social opportunity for fun as well as bonding of families.



Bicycle Path

Five hundred meters of uninterrupted cycling path along the driveway.

Imagine a quick 5km workout complete in 10 rounds of pedaling around the path.

For kids and adults alike – the opportunity to stay active without having to leave the community area.



Walkway and Jogging Track

Five hundred meters of walkway and jogging track, giving you a runway for a clear mind and better health.

An after-dinner walk with the whole family or a morning jog to start the day – keep the vigor alive.



Dry Fountain

Right from the dreams of Vienna we have designed a walking/dry fountain for the perfect picnic spot. Imagine a lunch date, or a family outing under the sun –

creating the perfect picture moment.

Skating Rink

For the kids who are here to leave a mark – skate marks, that is – we have created a no-holds-barred rink of fun and possibilities.

Practice, persevere, and succeed – we have laid the grounds for you.

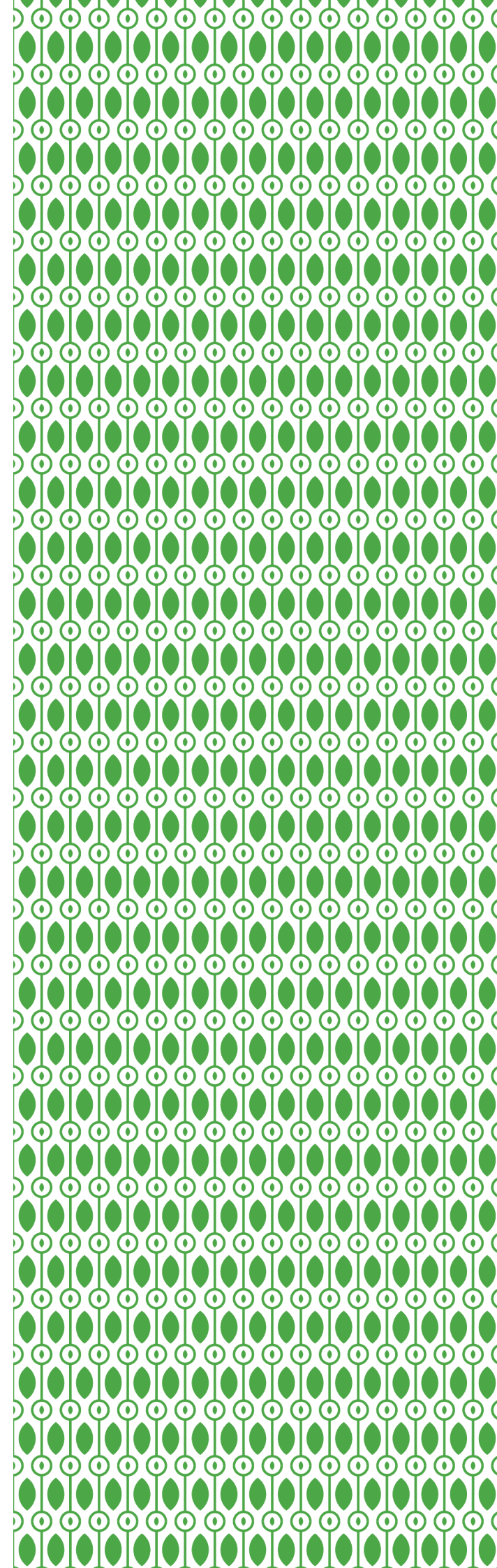


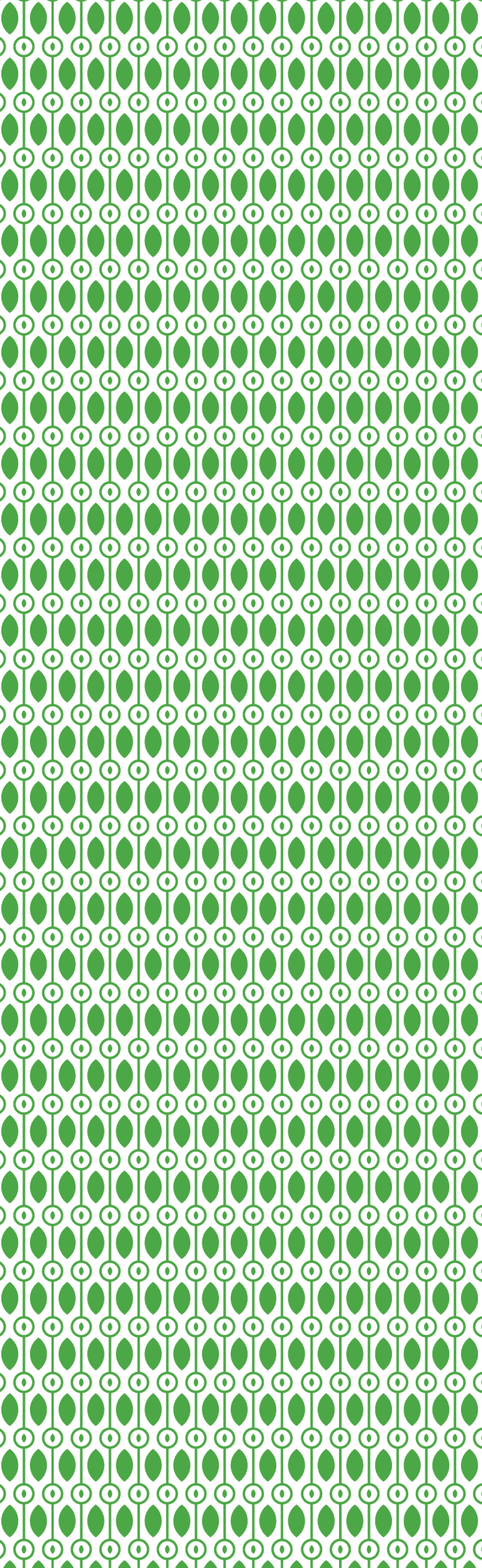


Pet Park

We have your little furry run-about in mind when we envision your dream home. Bring your pets to the park and socialize, while they mingle and make friends of their own.

The perfect melting pot for the **AROUND THE LIFE** pet community.





Cricket Net

Whether it is amateurs or the budding stars of tomorrow the cricket net is perfect for all.

They right encouragement from you and a playing field from us – let's make all their dreams come true.





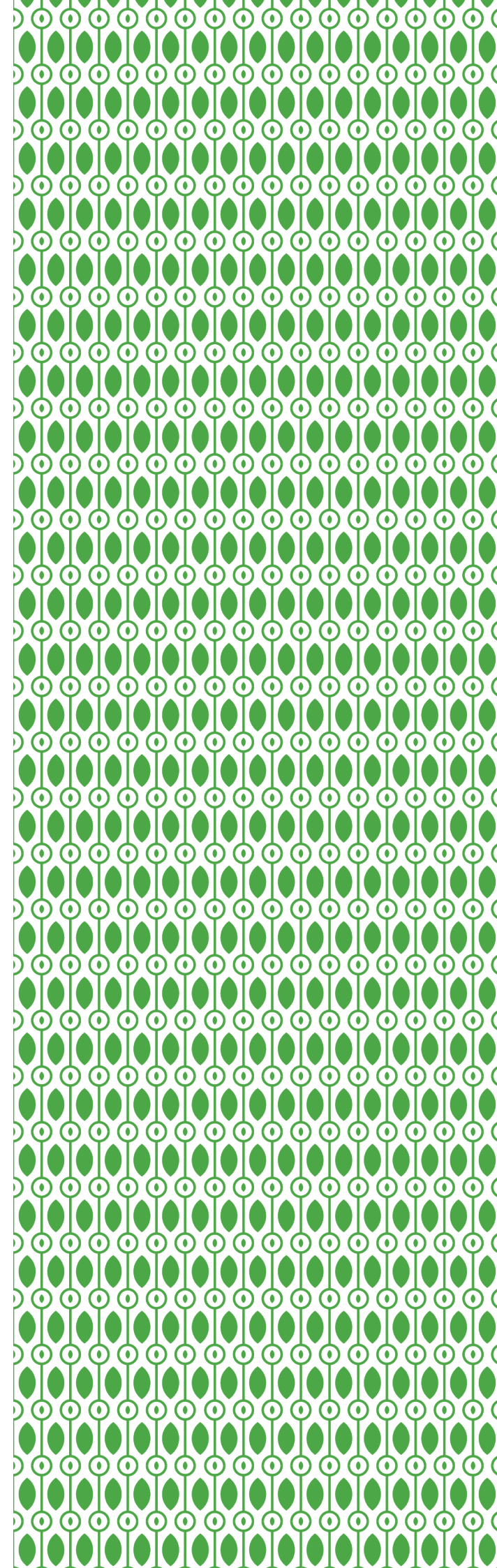
Seven-A-Side Futsal Ground

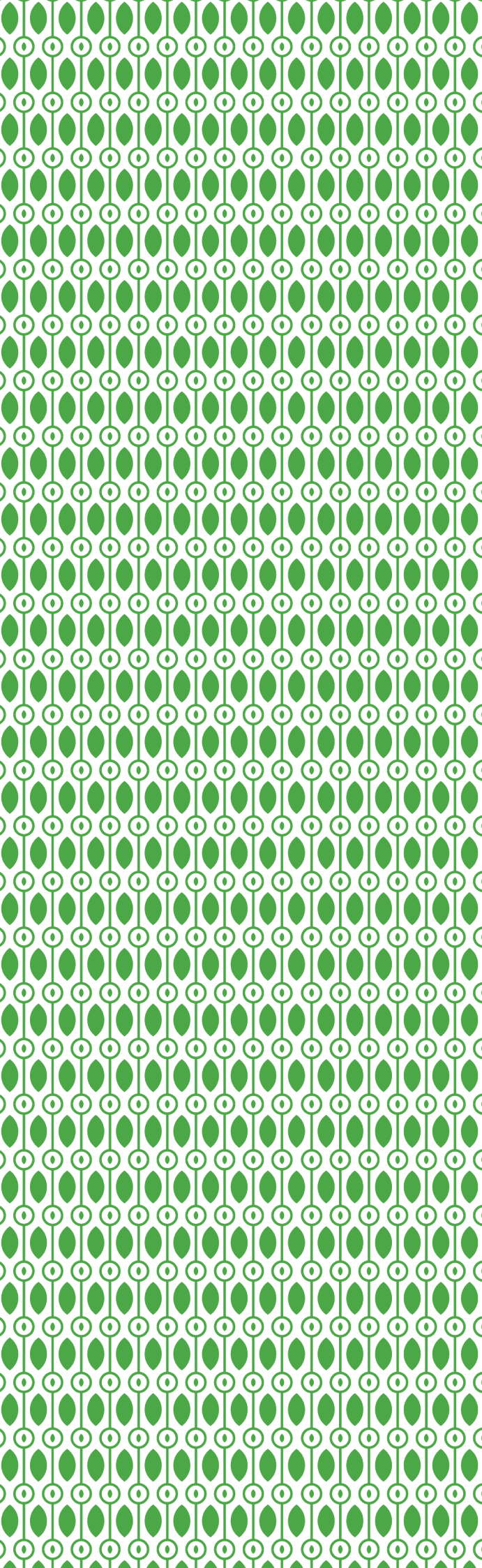
(22,000 SQ. FT.)

A premium and attractive feature of **AROUND THE LIFE** is our multi-sport, Seven-A-Side Futsal Ground. This is where the dreams of future footballers, rugby players, and athletes take seed.

An invigorated space that can be turned into four Five-A-Side courts. Imagine 40 kids playing together in harmony!

Well, and a little bit of competition, of course. Our youngsters get to throw the ball around to their heart's content and keep the **ENERGY ALIVE.**





Basketball/ Tennis/ Box Cricket Court (30.0m X 17.0m)

A multi-purpose court that allows all sports to be
played with professional vigor.

Be it basketball or tennis or box
cricket, the field transforms
accordingly to make your games
as exciting as they can be.





Wigwam Swing

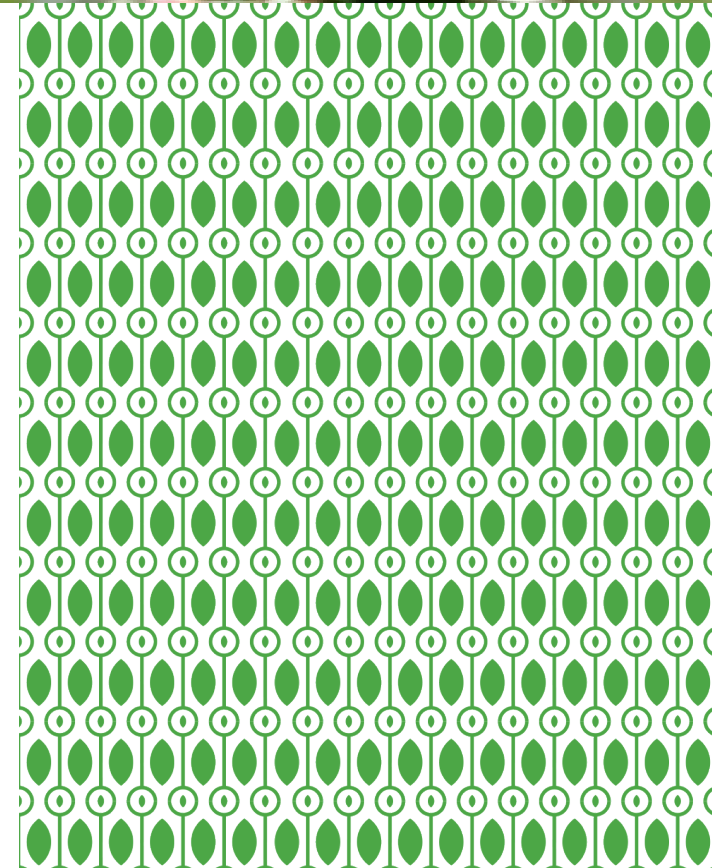
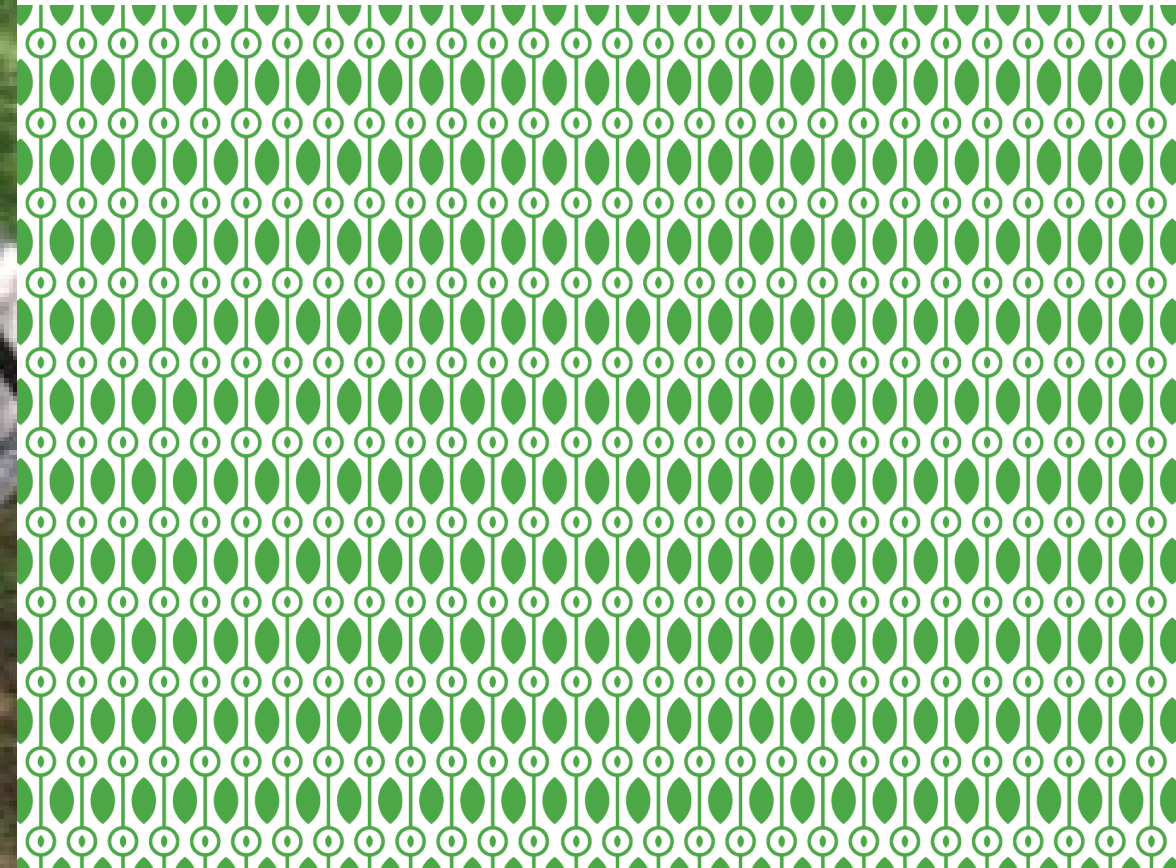
Relax. Replenish. Rewind.

Nestle into the perfect quiet in our corner with the Wigwam swing that is strategically located for you to reap the benefits of the aroma garden while you relax in the cozy cocoon of nostalgia.



Aroma Garden

A stroll around the garden is all you need to open up your chakras and let the olfactory sensory tower be awakened in the aroma garden. A variety of herbs, flowers, and leaves come together to create a feast for your senses.





Street Workout Station

A street workout station with fresh air and multi-purpose outdoor body strength equipment that are sure to engage you in a regular fitness regime.



Family Pavilion

Let the parent-child relationship foster while you make lifelong friends with like-minded people, who also have curiosity at the heart of their choices.

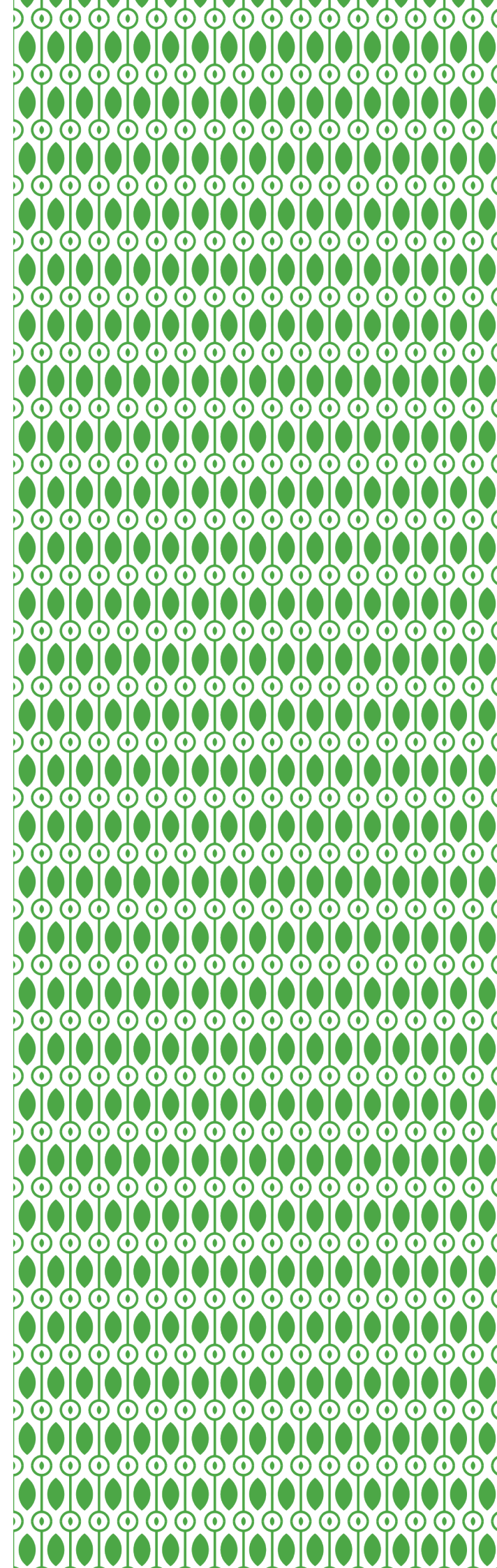
Welcome to the Family Pavilion.



Hammock Zone

A mid-afternoon nap under the kind Bangalore sun, or a jam session with your bandmates

The hammock zone is perfect to create holiday experiences even when you are right in the middle of a bustling city.





Sand Bed Walkway

Juxtaposed to the pebble walkway, the sand bed walkway is a much easier and relaxing experience, yet gives you as many benefits. Bare feet on the sand are exfoliated as you walk, the resistance of the sand strengthens the arches, ankles, and leg muscles.

All the while giving you a free foot massage.

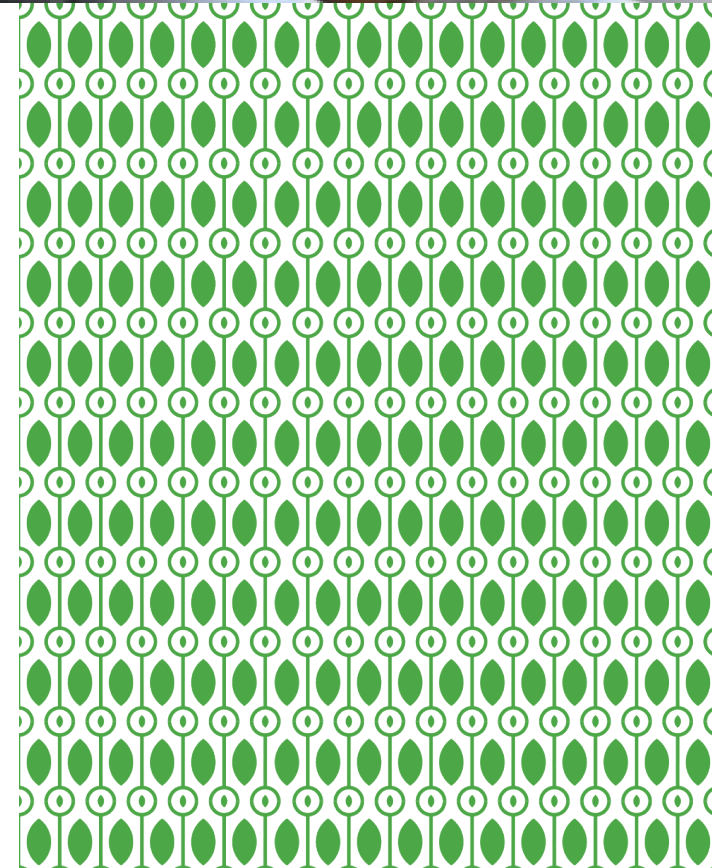
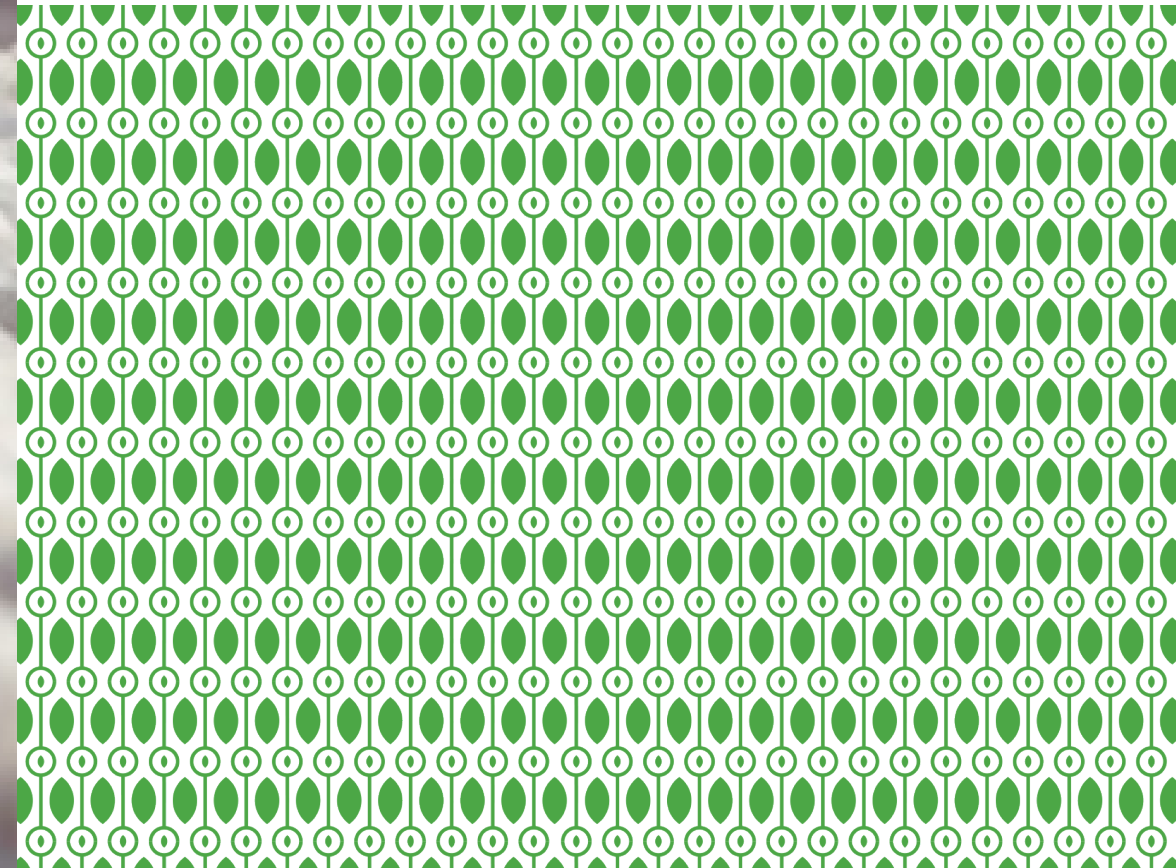


Reflexology Area

A walkway of pebbles and rounded therapeutic stones that are laid out for you to walk upon.

The benefits? Innumerable.

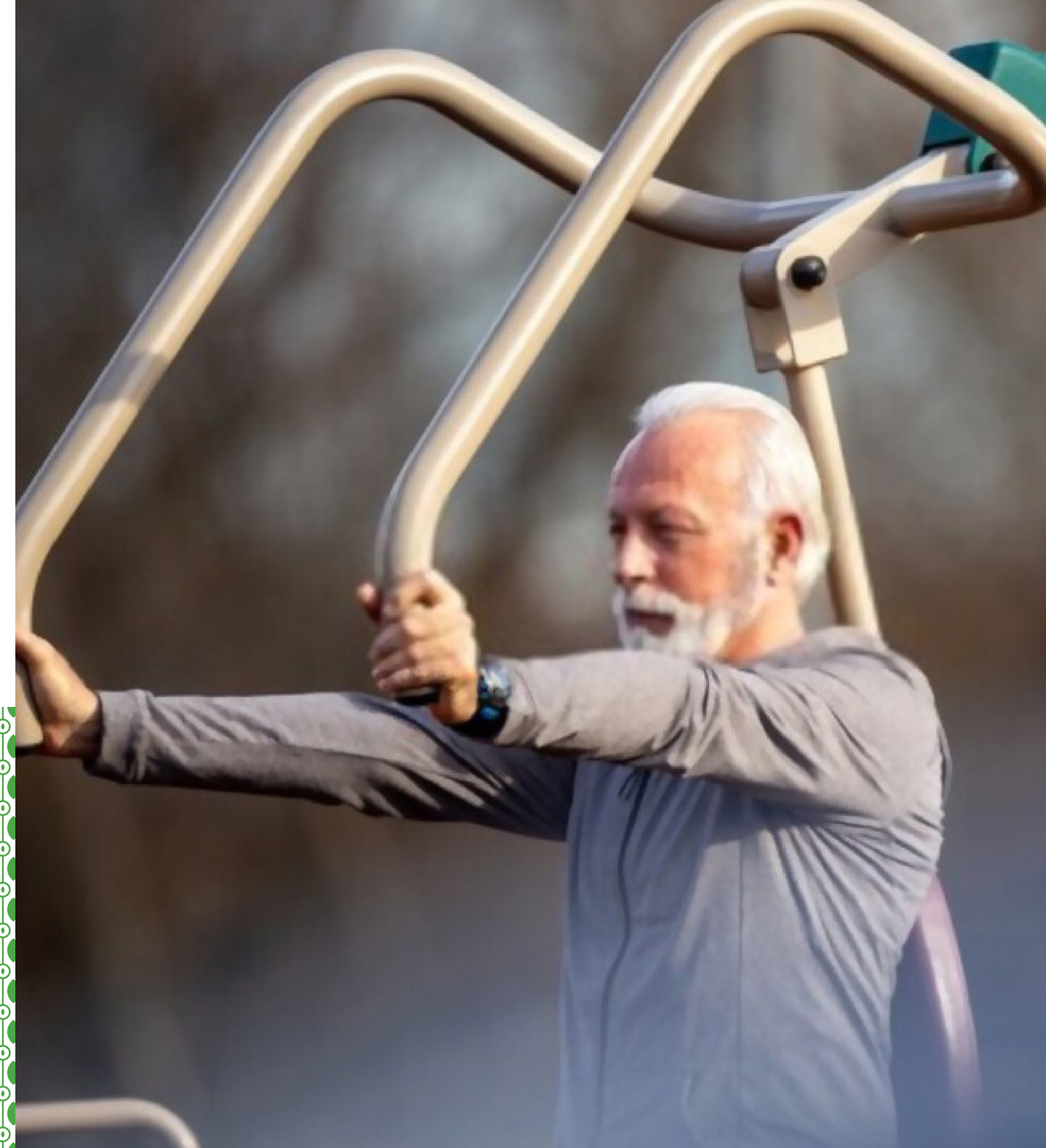
The pressure of the pebbles applied on the many nerve endings that are in our feet awaken the functioning of many organs and get the blood flowing.





Podium Outdoor Gym

At the Podium you will also find an outdoor gym for those who like to keep active. Increase your intake of oxygen when you exercise all your body muscles and break a good sweat.



Seating Alcoves

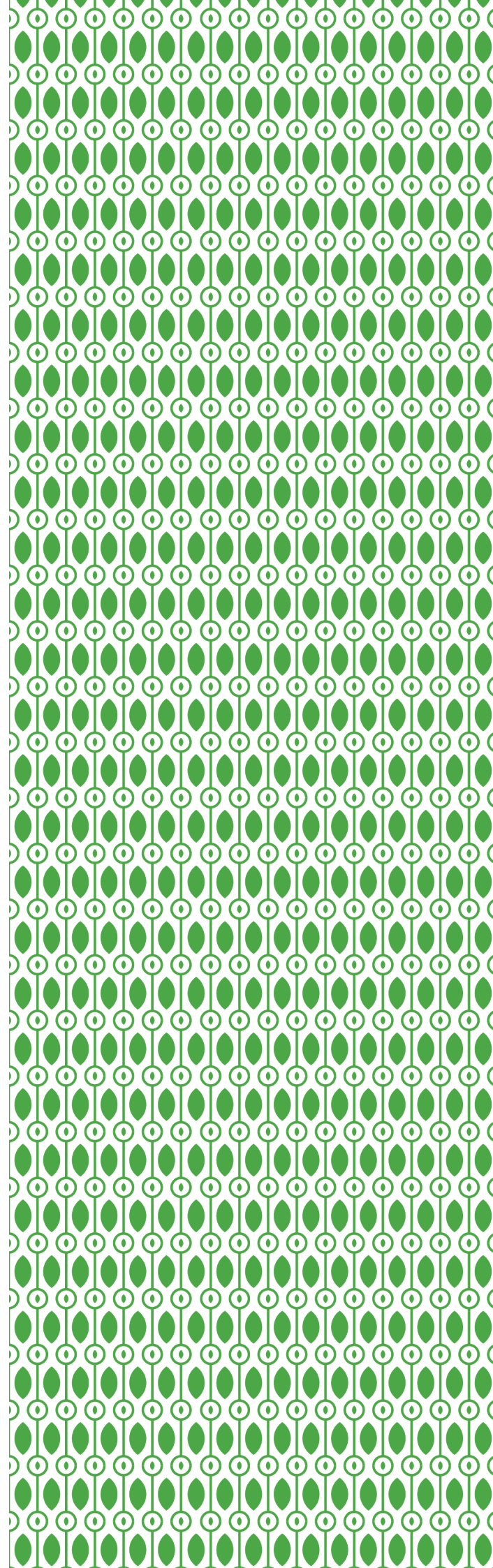
Bring back the sense of community with your very own seating alcove that also doubles up as the resting bay.



Tabletop Games

No set of amenities is complete without having the veterans of our society at the heart of it too. We have designed a nostalgia portal of old-school tabletop games that are sure to excite and engage our senior citizens.

- Chess
- Ludo
- Tiger & Goat/Bhag Chal





A space to call
your own is not
enough.

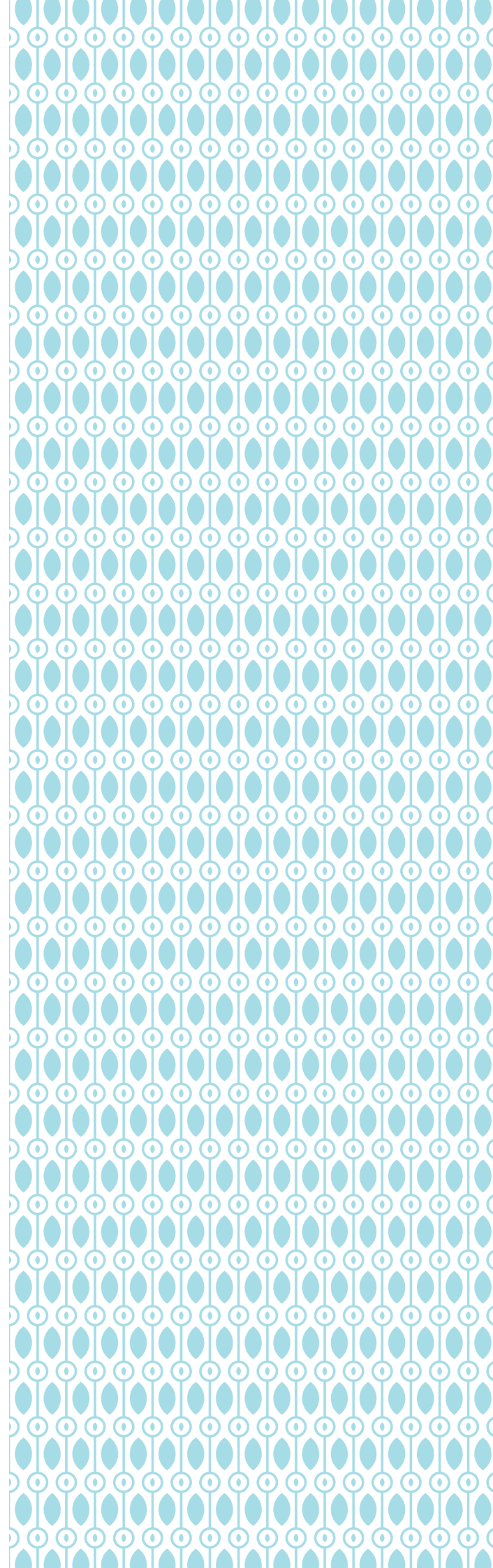
We say 10,000 square feet of space
under the light blue sky,
on top the towers,
complete with the best of life's luxuries
come close to enough.

TERRACE



Sacred Tree Corner

On every terrace, atop each of the three towers, you will find a mystical corner lush with trees of mythological significance. The positive aura invites you to take shade and reap the healthy benefits of ancient knowledge.



Herbal Garden

A herbal garden that doesn't just grow life but calls upon the magnificent way of living we have always known. On your terrace, you will find an island of herbal plants that you can pluck and chew or add to the pot to bring zesty recipes to life.

Your friends will wonder —
"Uuh! Where is this fresh thyme from?"

Instant Use



Mentha Arvensis



Ocimum Sanctum



Stevia Rebaudiana

Blend or Brew



Mentha Peperita



Centella Asiatica



Cymbopogon Citratus



Plectranthus Amboinicus

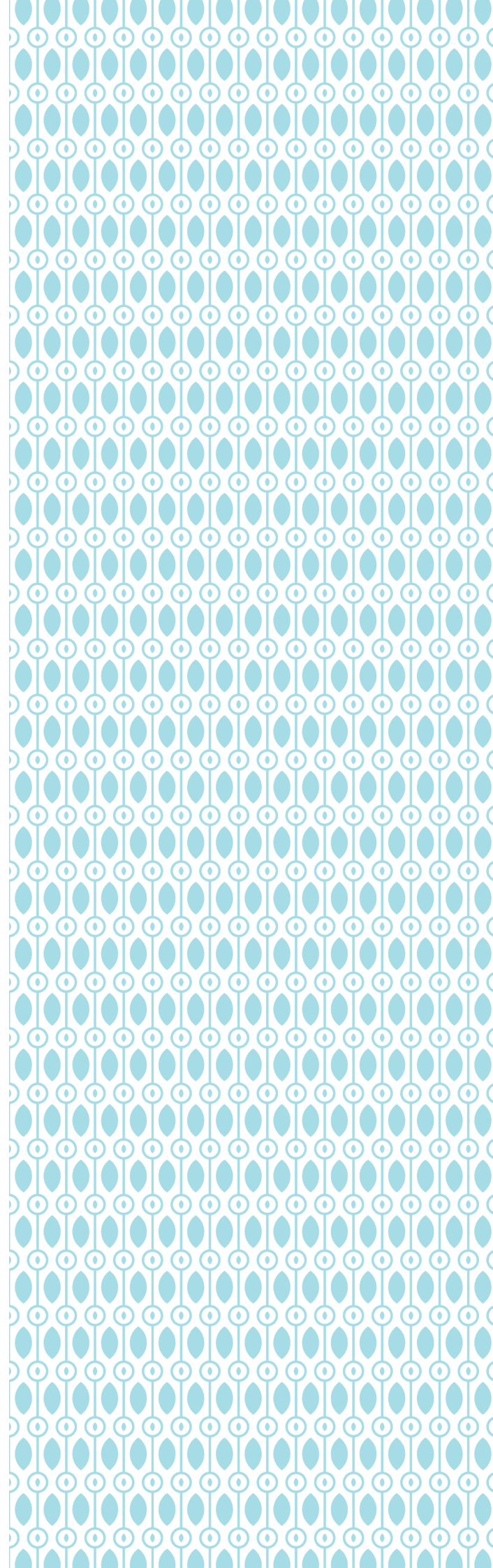


Aloe Barbadensis



Outdoor Working Pods

The world has changed and so must the way we think of work, fun, and life. Integrate all into one and you let yourself be intrigued by the mundane – that is the secret to a good life.



Diabetes Garden

Take a stroll down lanes of herbs and plants that are medicinal, therapeutic, and passed down from our ancient knowledge of the Earth. This island of sugar-reducing plants is sure to be a joy for the whole family.

- **Gymnema Sylvestre**
- **Costus Igneus**
- **Tinospora Cordifolia**

Get a natural surge of insulin from the plants in your diabetes garden. Find nature's remedy to bodily chemical imbalance right at your doorstep.



Terrace Outdoor Gym

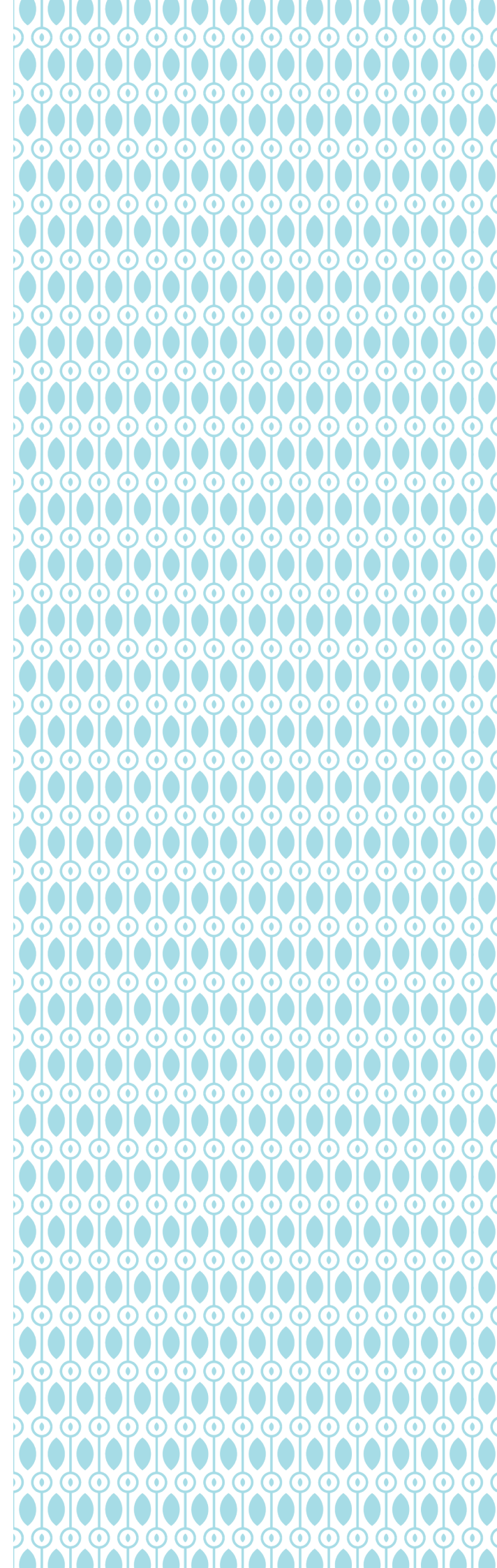
Along with the outdoor gyms at the Podium, you can also take advantage of the outdoor gyms on the terrace level of all the three towers. Ditch the indoor gyms and make the most of the morning sun showering you with Vitamin D, fresh air, and the blood-pumping Oxygen. Keeping a routine of fitness has never been easier for our senior citizens.





Zero Gravity Zone

Defy gravity on your very own terrace amidst a range of swings where you can relax and forget about the world for a minute. Feel the fresh air and the altitude.



Terrace Water Feature

Imagine the quintessential quiet born of our gushing water that cancels out all the noise of the outside world. In the middle of the terrace outdoor working pods, you will find just that. A secluded experience created by the water feature.

A place to finally get lost in that book you have been waiting to pick up. A place to make your vision come to life.

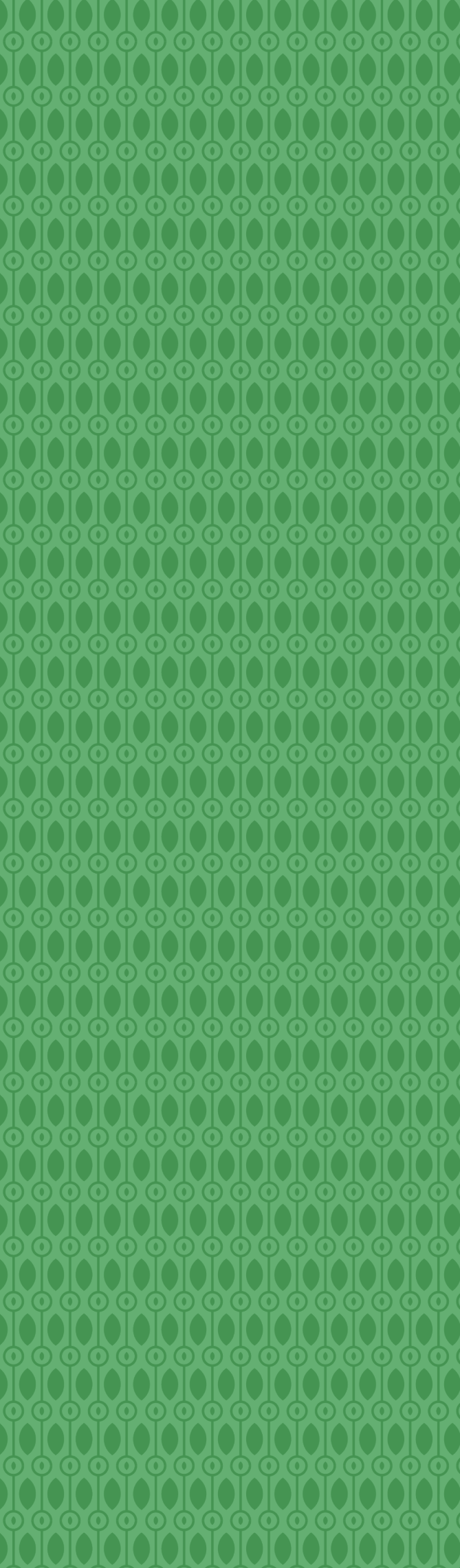


When futuristic technology, passion for sustainability, astounding design, and trueness of nature come together – they surround all your senses to create one, truly optimal lifestyle.

For some, leisure translates to a relaxing drink by the pool, and for others, it means an intense game of squash.

No matter which one you are, our massive **30,000+ square feet, 4 storey** Clubhouse comes packed with a little something for everyone's taste.

CLUBHOUSE



Club Verde invites you to step into a world of sophisticated leisure, intuitive technology, and gamified learning.



Temperature-controlled Swimming Pool

Imagine a half-an-Olympic size pool designed keeping you in mind.

We have made this a reality by designing a **27 meters long and 9.7 meters wide** pool that is perfect for professional and amateur swimmers, alike.

Control the temperature as you wish, take it all in, and take a dive.

Kids' Pool

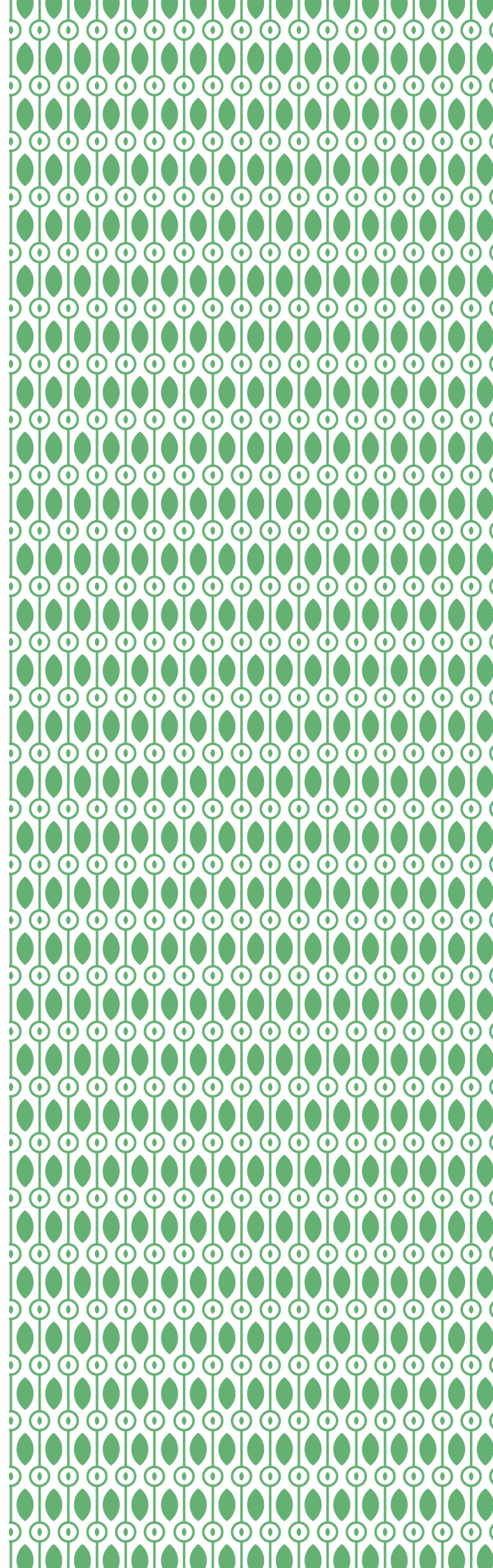
Of course, no pool experience is complete if our young ones can't have fun. Rest assured there as they are sure to begin their aqua-fun journey here at the kids' pool.

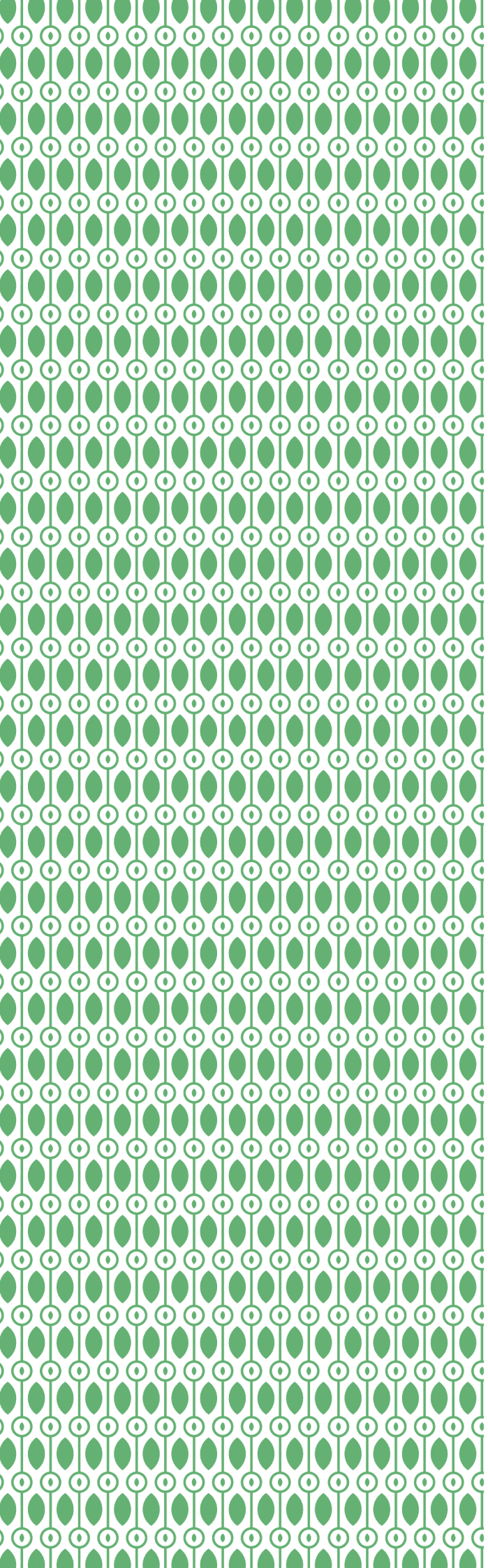




Golf Simulation

Halfway to Golf Club perfection, this is where you perfect your strokes and party while you putt.

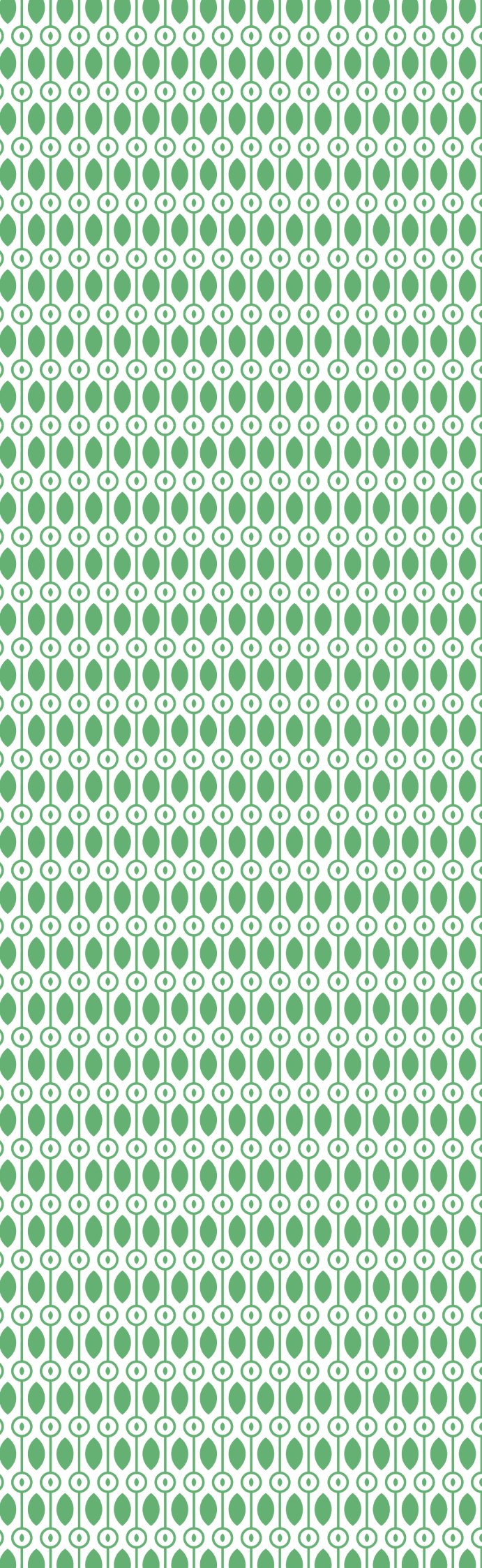




Multi-purpose Hall with Pantry

There is something to be said about a host's flair for hospitality. If creating experiences is your passion, or hosting galas that are remembered for years your journey has found its destination at **AROUND THE LIFE.**





Is convenience a distraction or an enabler in the pursuit of curiosity? It's time to find out. Bring convenience a step closer right where you need it.

From pre-event hairdos, to elaborate grocery runs for the big dinner – your needs are met, intuitively.



Chai point

Chai, chat, and chill right here in the community.



Laundry

The convenience of laundry is never too far.



Salon

Get the right hairdo, perfect nails, and more.



Snacks

Evening high-tea comes to life in the snacks corner.



Medicine

A pharmacy that defines convenience.



Clinic

Get first-aid and the right attention from the doctor.



Creche

Be worry-free with a creche to enable your lifestyle.



Supermarket

Grocery runs have never been more fun. Make new friends, make gourmet finds, and more in your supermarket.

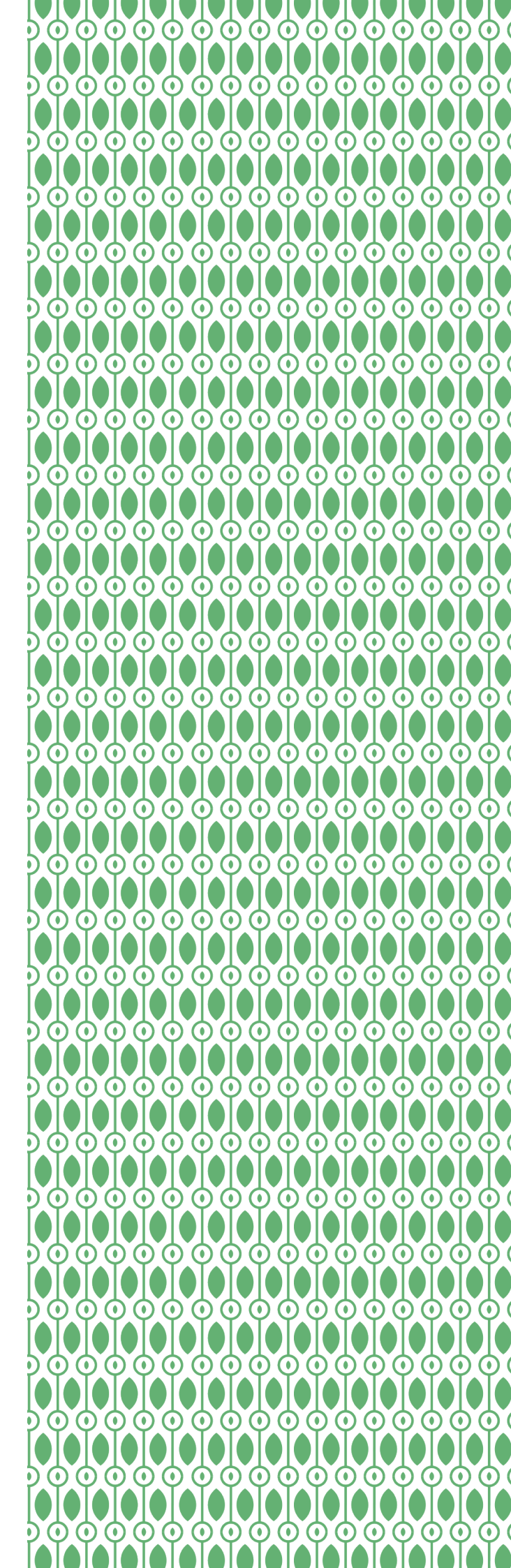
Images used for representation purposes



-  Schools
-  Park
-  Hospital
-  Business Park
-  Cinema
-  Sports
-  Around the Life

Whitefield at your doorstep

Your new address:
AROUND THE LIFE, Seegehalli,
Krishnarajapura, Bengaluru,
Karnataka 560067











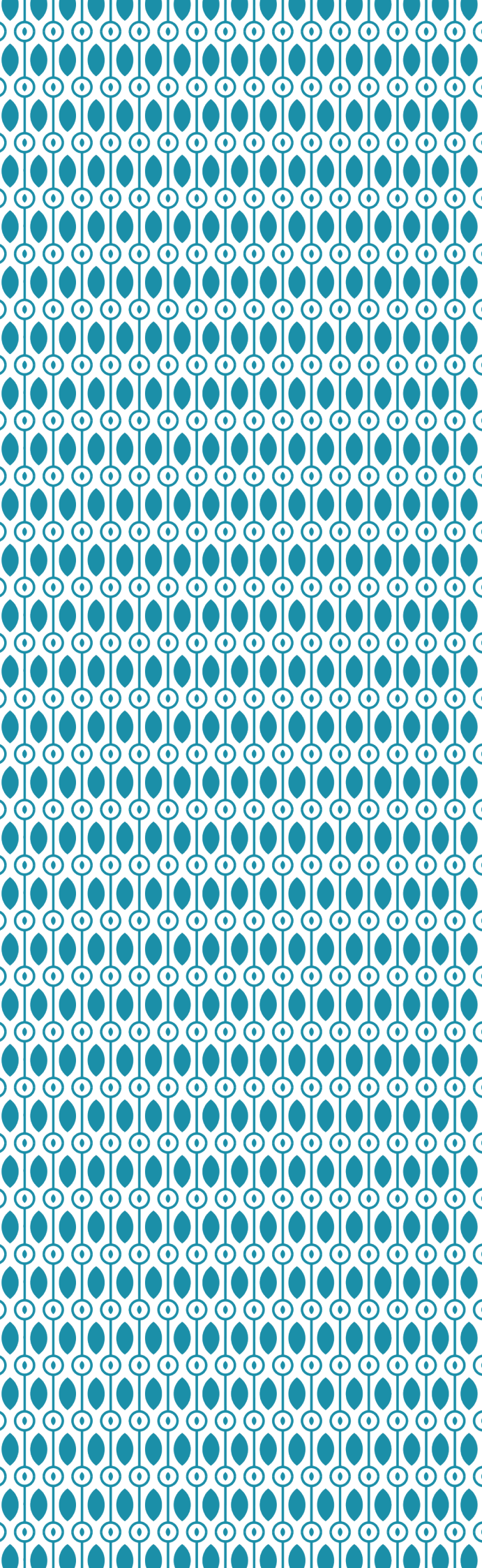


Your dream
is homemade
to fit.

At Around The Life, we offer you the choice between exquisite two, three, and four-bedroom homes curated specially for you. Come home to comfort that captivates. Come home to the sweet harmony of creativity and capability.

Come home to aspiration for the finer things in life — kept alive.

Walk into your tower through wide lobbies that welcome your arrival. Complete with four elevators per tower - **three large passenger elevators** and **one service elevator** with separate entry & exit.



Rest easy on the edge of
your own personal **Bay
Windows** in every home.

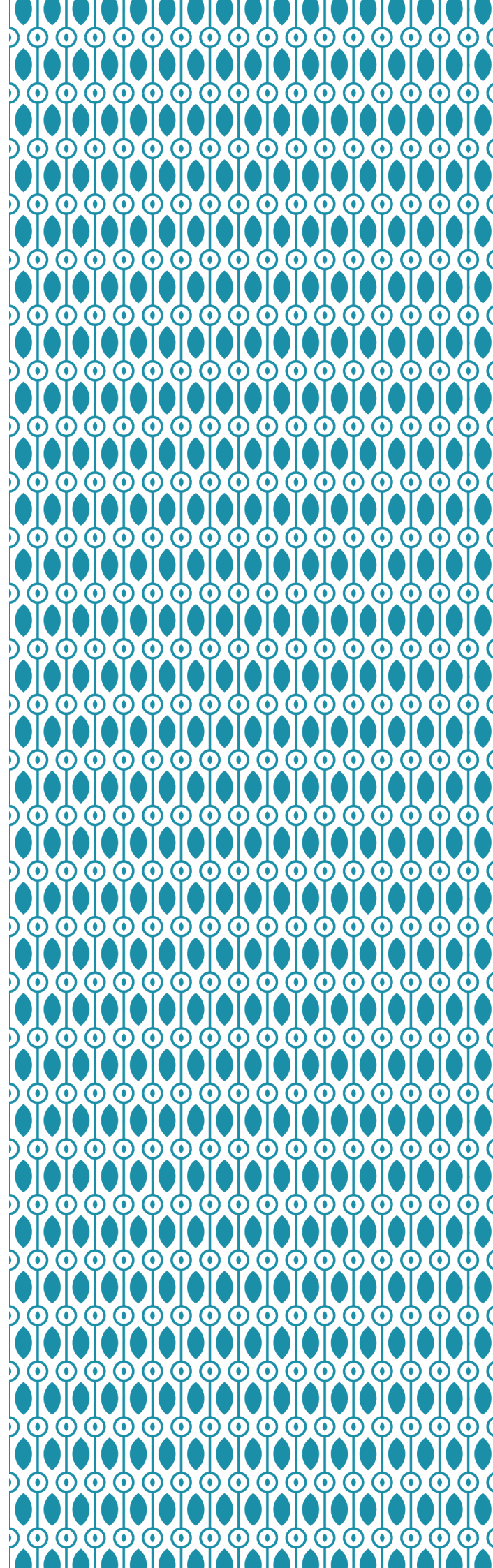
A view to behold from your
bedroom each morning.

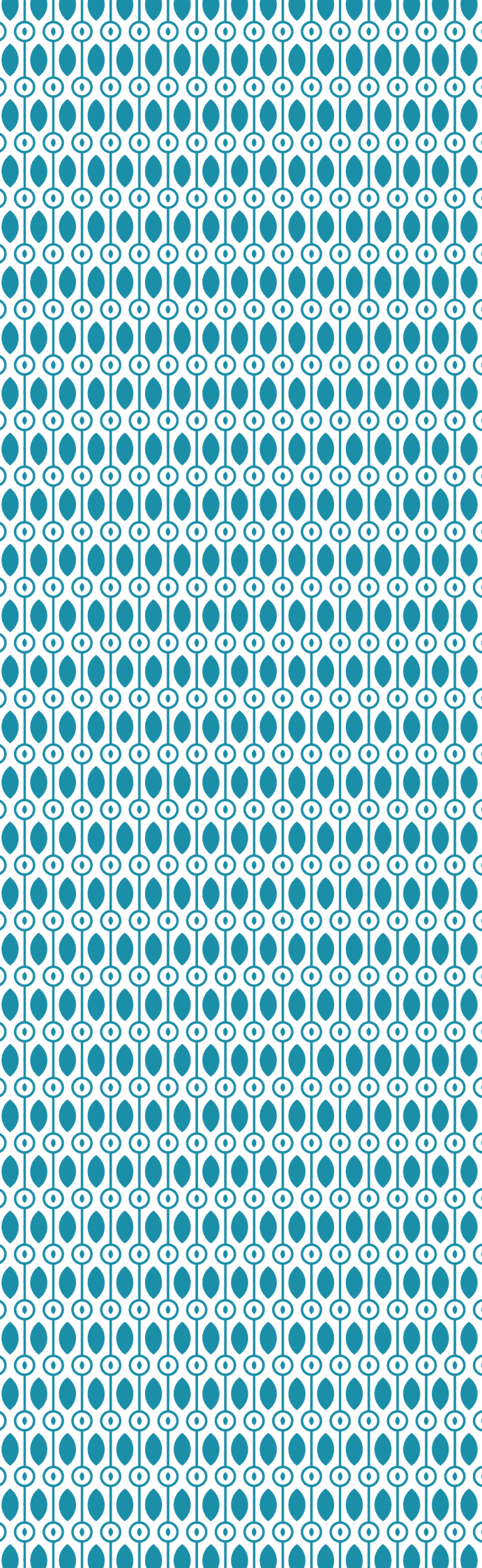




No matter how many rooms
in your home, your **Balconies**
must be palatial.

We have kept that in mind
when designing each home.



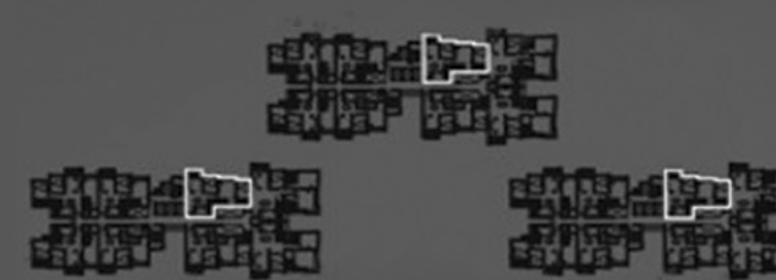
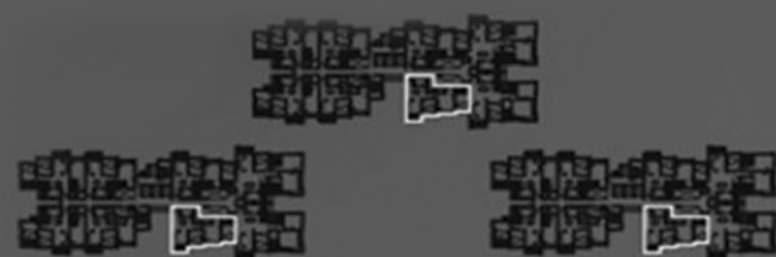


Walk-in Closets in every
Master Bedroom.

A space to meditate as you
begin and end your day.

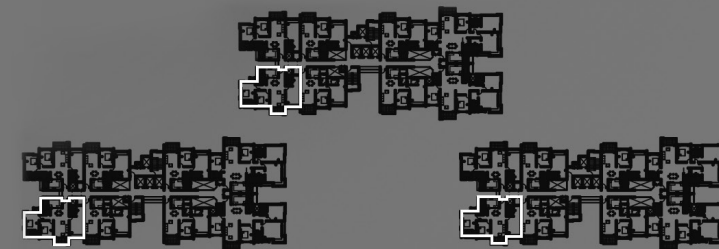


Time for living is here.



2 BHK

Time for relaxation is here.



3
B
E
D
R
O
O
M
S

Time for
exploration
is here.



4
BHK

Curiosity – unleashed, untamed, back to life.

Master Plan

- | | |
|---------------------------------|---|
| 1. Entry/exit | 17. Cricket net |
| 2. Security cabin | 18. Pet park |
| 3. Entry to basement | 19. Street workout station |
| 4. Fire driveway | 20. Tabletop games |
| 5. Walkway/jogging track | 21. Seating alcove |
| 6. Bicycle track | 22. Swing court |
| 7. Flower bed with trees | 23. Interactive floor games |
| 8. Skating rink | 24. Futsal court -7A side (54.4m x 30.3m) |
| 9. Toddler play area (sandpit) | 25. Outdoor gym |
| 10. Mini fort play area | 26. Sandbed walkway |
| 11. Dry fountain | 27. Reflexology area |
| 12. Family pavilion | 28. O2 generating plants |
| 13. Chromotherapy flower garden | 29. Basketball/tennis court box cricket (30.0m X 17.0m) |
| 14. Children's play area | 30. Hammock zone |
| 15. Wigwam swing | 31. Nutritive garden |
| 16. Aroma garden | 32. Peripheral plantation |
| | 33. Services |



List of all Amenities

Podium

- Flower bed with trees
- Dry fountain
- Family pavilion
- Chromotherapy flower garden
- Wigwam swing
- Aroma garden
- Stepping stone walkway
- Pet park
- Seating alcoves
- Swing court
- Reflexology area
- Oxygen pavilion
- Hammock zone
- Nutritive garden
- Peripheral plantations
- Jogging track
- Skating rink
- Bicycle track
- Toddlers' play area
- Mini fort play area
- Multipurpose Court
- Kompan children's play park
- Cricket net
- Street workout station
- Tabletop games
- Interactive floor games
- 7-A-side futsal court
- Podium outdoor gym

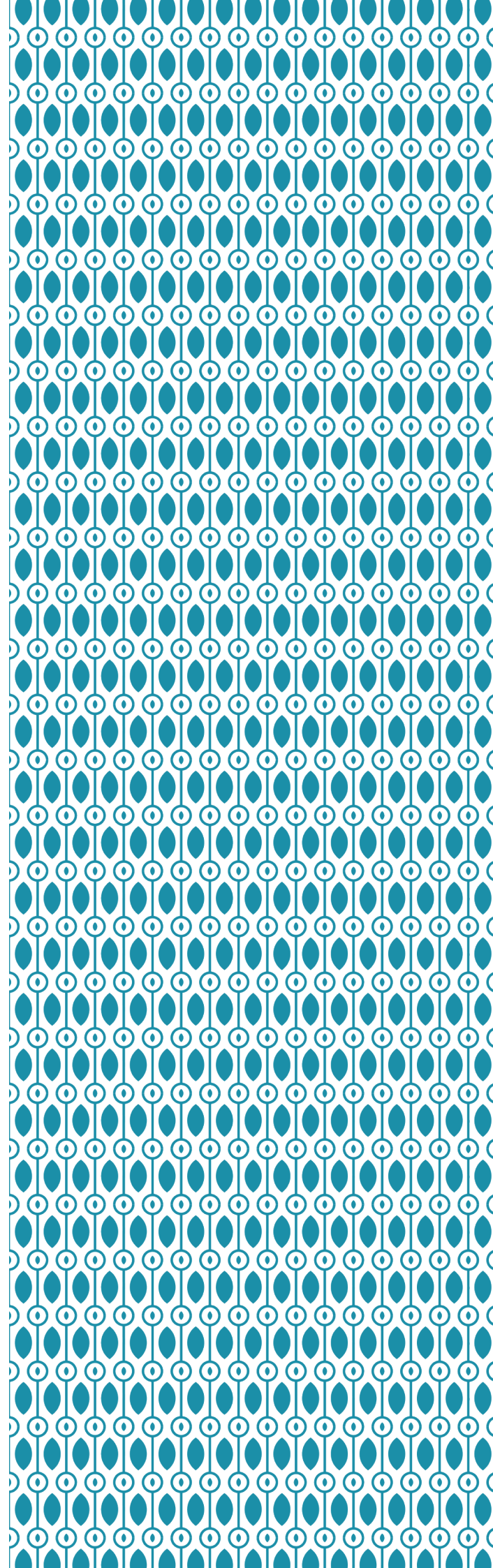
Terrace

- Sacred tree corner
- Herbal garden
- Diabetes garden
- Outdoor working pod
- Water feature
- Panorama point
- Zero gravity zone
- Terrace outdoor gym

Clubhouse

- Entry lounge
- Meeting rooms
- Business center
- Multipurpose hall with pantry
- Mini theater
- Gym
- Steam room
- Sauna room
- Jacuzzi
- Temperature-controlled pool
- Kids pool
- Water yoga
- Table tennis
- Chess
- Carrom
- Foosball
- Pool table
- Ludo
- Under Soccer
- Badminton court (2 no's)
- Golf simulation
- Card games room
- Aerobics room
- Yoga room
- Chai point
- Laundry
- Salon
- Snacks
- Medicine
- Clinic
- Creche
- Supermarket

- Toddlers
- Kids
- Teens
- Adults
- Middle-Aged Adults
- Senior Citizens
- Pets
- All Age Groups



Engaged Minds, Happy Minds

General Specifications

- RCC framed structure on aluminum formwork (all towers)
- Vitrified tiles for lobby area (all towers)
- Staircase treads, landing, and skirting – granite for ground floor
- Staircase treads and landing – tiles for typical floor
- Gyp board false ceiling and concealed lighting for lift lobby





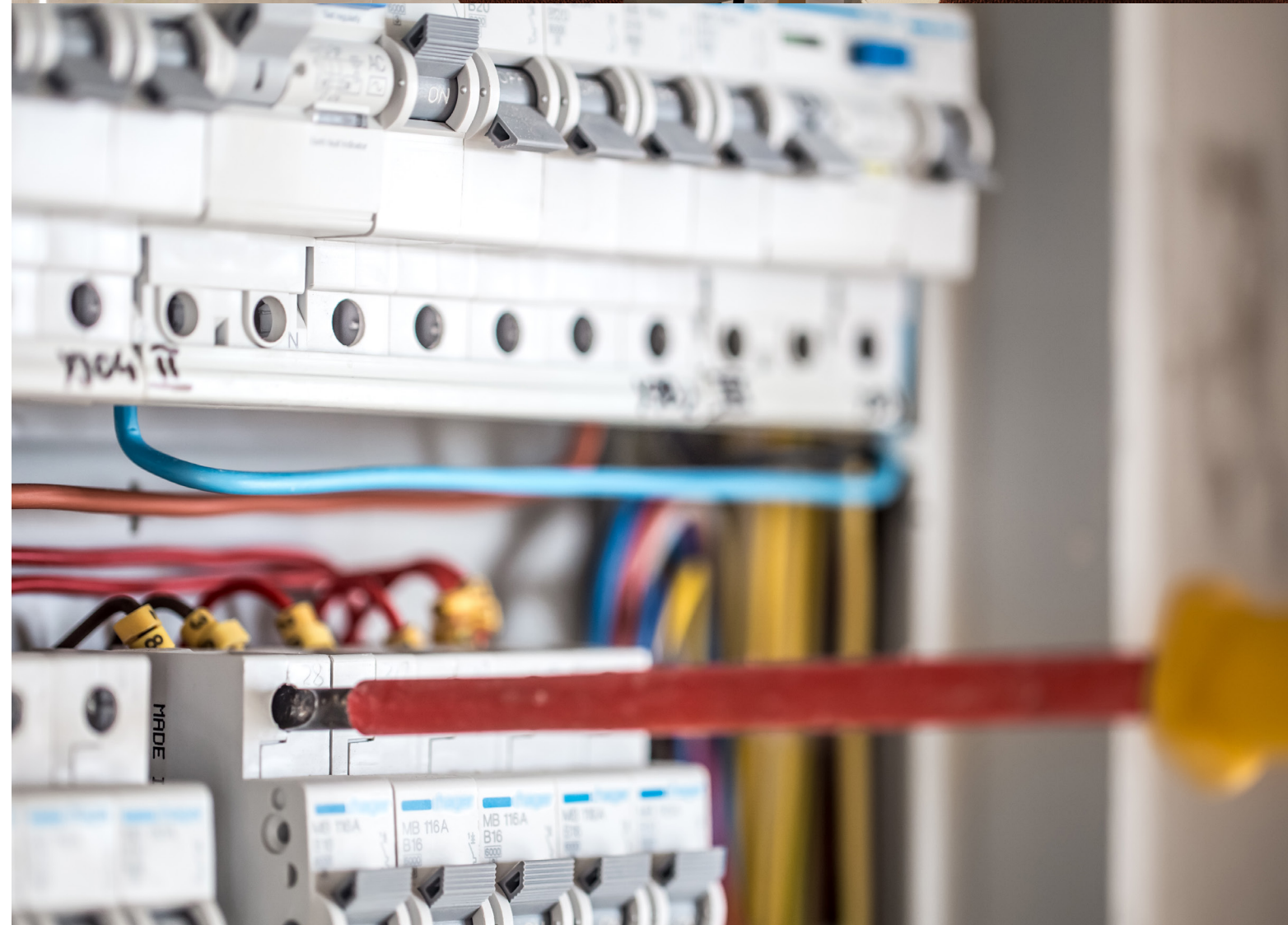
Residential Units

- Interior: Emulsion for internal walls and ceilings
- Exterior: Water-resistant texture paint
- Flooring: Living/dining/bedrooms/balconies vitrified tiles
- Balconies: MS railings for all
- Windows: MS grill



Electrical

- Power: 6/5/4 KW single phase for 4/3/2 BHK
- Wiring: RR Kabel/Havel/Polycab or equivalent
- Earthing: 1/18 copper wire used for earthing using loop system
- One Earth Leakage Circuit Breaker and MCB: in each unit
- Switches: all switches shall be of Legrand or equivalent



Toilet Fittings and Accessories

- Water closets: all have wall-hung Kohler EWC Kohler
- Showers: hot and cold mixer (Kohler)
- Basin: Kohler mixer for the wash basins in toilets
- Master toilets/other toilets and kitchen/utility: Kohler CP fittings
- Granite counters washbasins in all toilets
- Anti-skid ceramic tiles for flooring
- Ceramic tile cladding up to the false ceiling
- Thermostats in all washrooms





Doors and Windows

- Frames: hardwood door frames
- Bathroom doors: water-resistant flush type
- Door shutters: door shutters in solid core flush
- 2/3 track UPVC sliding with clear glass and mosquito mesh
- Hardware: All hardware is brush-finished stainless steel.
The main door has a rim lock.
All other doors have door bolts and amortized cylindrical lock
- Door stoppers: Door stoppers: magnetic/ concealed door stoppers for the main door and bedroom doors
- Main door – veneer
bedroom doors – skin veneer
bathroom doors – flush type



Kitchen

- Utility: dadoing upto window bottom level
- Flooring: anti skid tiles
- Kitchen: Vitrified tiles flooring



Fire Safety And Security System

- Security systems: intruder alarm and video surveillance for common areas on the ground floor
- Centralized security surveillance system: monitor movement of vehicles/visitors/guests
- Sprinklers for the entire building as per fire norms
- Fire duct in each lobby and external yard hydrants





Telephone and Data/ Broadband Connection

- TV outlets in the master bedroom and living room
- Telephone point in the master bedroom and living room
- Broadband connection and intercom facility for each unit
- FTTH cable system for all homes to support broadband
- Centralized DTH system (option to subscribe to any DTH service provider of your choice (from the available pool))
- Video door bell



Utilities/ Services

- Backup power: 100% backup power to the common area lighting, pumps, motors, etc.
- Power backup: 1.0 KW for all residential units individually
- Solar power generation: to supply the generated units to the grid on a net metering system for 200 KWA
- Generators with acoustic enclosures and AMF panel with automatic change-over switch
- Rainwater harvesting: percolation pits for rainwater harvesting
- Sewage treatment: a tertiary sewage treatment plant with separate plumbing for the use of recycled water in landscaping and flushing systems
- Elevators: 3 elevators per block and 1 service elevator – 15 passengers each with automatic doors
- RFID entry system at the main gate
- STP/WWTP/UF/RO



Approvals

PURPOSE	SANCTION AUTHORITY	APPROVAL DATE	APPROVAL NUMBER
Plan Sanction	Bengaluru Development Authority	17/06/2022	BDA/DA/EM/AEE-1/T S-4/E/13/2022-23 CTE-322557
Pollution	Karnataka State Pollution Control Board	29/12/2020	CTE-322557
Fire	Karnataka State Fire & Emergency Services Number	16/12/2021	KSFES/GBC(1)/327
Environment	State Level Environment Impact Assessment Authority - Karnataka	27/07/2020	SEIAA 23 CON 2022
Aviation	Airport Authority of India	17/03/2020	NA
Telecommunication	Bharat Sanchar Nigam Limited	25/02/2020	NA
Electricity	Bangalore Electricity Supply Company Limited	18/07/2022	EE/HKT/AEE(0)/AE-1/2022-23/2856
General License	Local Panchayat	14/07/2022	35
Water	Bangalore waste Water & Sewage Board (Endorsement)	13/07/2022	BWSSB/EE WWM-110V-3/TO/466
RERA	Real Estate Development Authority	02/08/2022	PRM/KA/RERA/1251/446/PR/020822/005125

Other Keya Projects

Upcoming Project:



The Lake Terraces

Location - E city Phase I,
Unit Types - 2 & 3 BHK's
Super Builtup Area -
1175-1700,
Starting - Q4, 2022,
No of units - 440,
Completion - Dec 2025

Upcoming Project:



The Urban Forest

Location -
Sarjapur Road
Unit Types -
2/3/4 BHK's
Super Builtup Area -
1250-2500,
Starting - Q4, 2022,
No of Units -750,
Completion - Dec 2025

Ongoing Project:



Keya Spring

Location -
Banerghatta Road,
Unit Types - 2&3 BHK's
Super Builtup Area -
1325-1375 (2BHK)
1740-2270 (3BHK)
Status - Ongoing,
Completion - Dec 2023
RERA No-
PRM/KA/RERA/1251/
310/PR/180516/001682

The little joy in knowing a better tomorrow comes,
The little smile that folds with the winds of change,
The little glint in eyes that says, "I will try again."
We remind you to keep hoping for a new dawn.

Keeping the tradition of
little joys **alive.**

Hope,
kept alive.



Team

Architects



Landscape



Mechanical, Electrical and Plumbing



Green Building



Structural

AEC NexGen
Consultancy LLP

Banks



#17, Regent Court, Ground Floor,
80 Feet Road, Koramangala 4th Block,
Bangalore - 560034, Karnataka, India.

Phone: 88844 40201 | 080 46612000

Email: info@keyahomes.in

Web: <https://keyahomes.in/>

AROUND THE LIFE

Use the QR code below
to see the geolocation

